

QUALITY

INNOVATION

PROGRESS

INNOVATION

QUALITY

PROGRESS

**GRINDING WHEELS FOR CUTTING TOOLS IN THE
WOODWORKING AND PLASTICS INDUSTRY
TOOLING INDUSTRY**







A Company within the SWAROVSKI Group

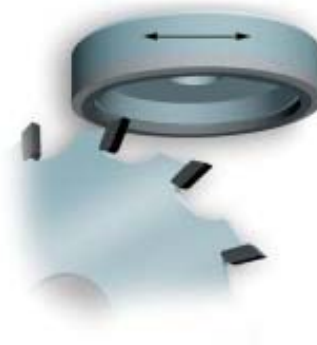


INDEX

DIAMOND AND CBN GRINDING TOOLS FOR ...

... BACK GRINDING on...

- AKEMAT 
- Vollmer Biberach 
- Vollmer Dornhan 
- WALTER AG 
- WIDMA 
- Universal Grinding machines 



INDEX

DIAMOND AND CBN GRINDING TOOLS FOR ...

... FACE GRINDING on ...

- AKEMAT [▶](#)
- Vollmer Biberach [▶](#)
- Vollmer Dornhan [▶](#)
- WALTER AG [▶](#)
- WIDMA [▶](#)
- Weinig [▶](#)
- Universal Grinding machines [▶](#)



INDEX

DIAMOND AND CBN GRINDING TOOLS FOR ...

... SIDE GRINDING on ...

- AKEMAT ▶
- Vollmer Biberach ▶
- Vollmer Dornhan ▶
- WALTER AG ▶
- Universal Grinding machines ▶



... TEETH GRINDING on ...

- Loroach, Rekord, Schmidt-Tempo ▶
- Schmidt-Tempo ECE ▶



... PROFILE GRINDING on ...

- Weinig Rondamat ▶
- Universal Profile Grinders ▶
- Profile Grinding - Pin Drills ▶

INDEX

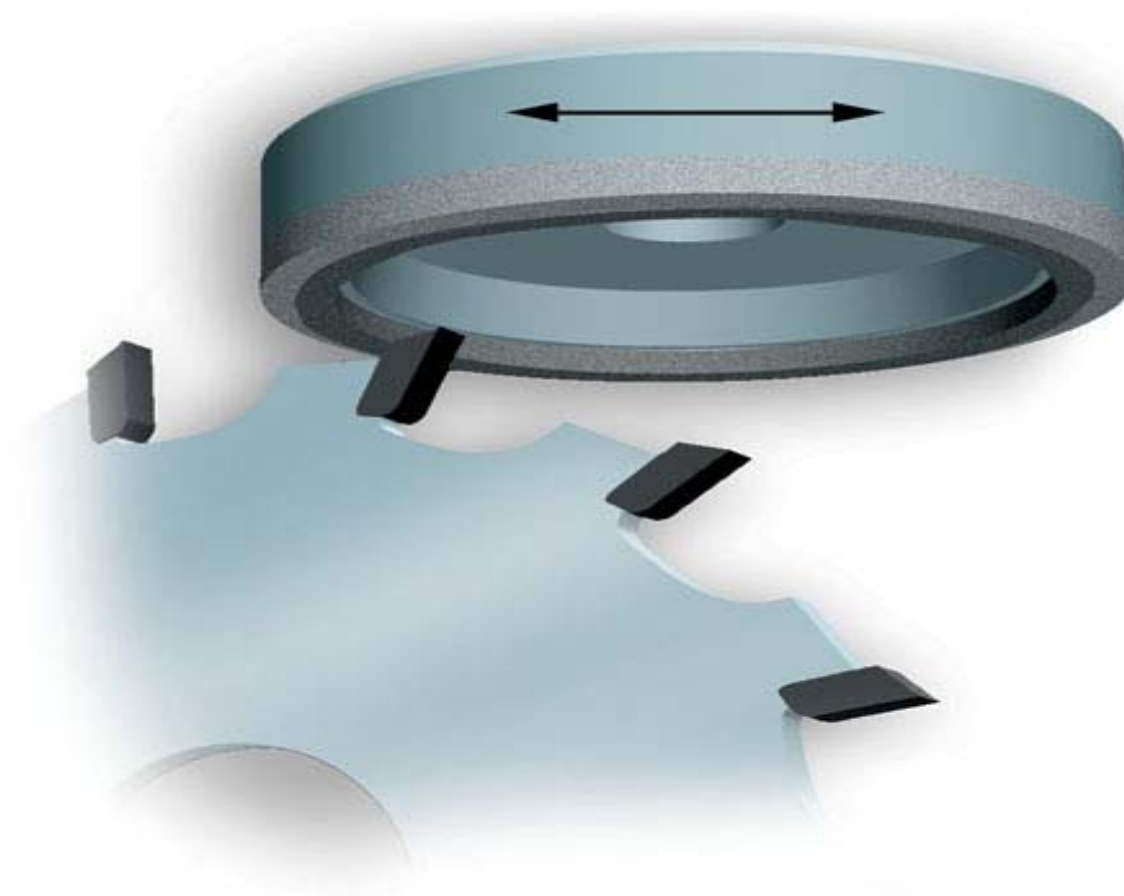
CONVENTIONAL GRINDING TOOLS FOR...

... *VN-MOD Program* [▶](#)

- Automatic Saw Sharpening Machines
 - Shape 1 – Straight Grinding Wheel [▶](#)
 - Shape 6 – Cup Grinding Wheel [▶](#)
 - Shape 11 – Conical Cup Wheel [▶](#)
 - Shape 12 – Conical Cup Wheel [▶](#)
- Effect Grinding with Elastic-Grinding Wheels [▶](#)
- Sharpening Sticks [▶](#)
- Jointing Stones [▶](#)
- Order Information [▶](#)

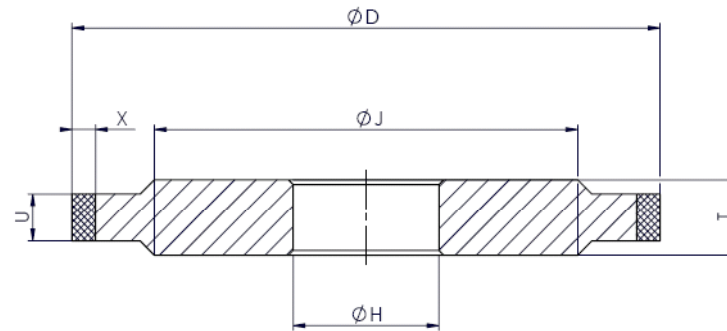


BACK GRINDING

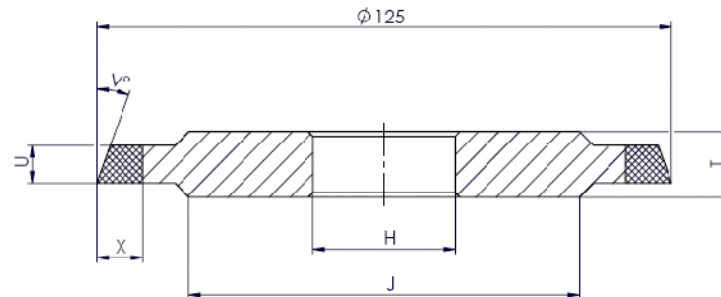


Diamond Wheels

Index



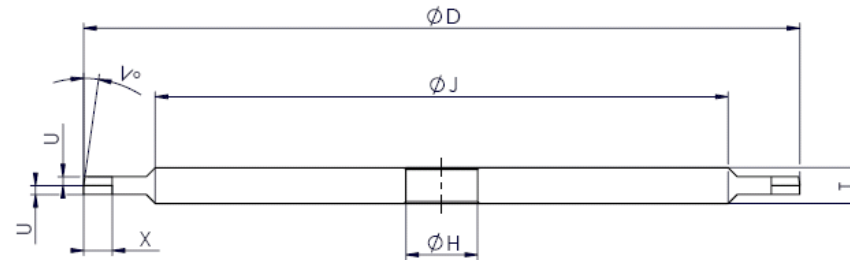
Form	Zeichnung	D	T	H	U	X	Körnung	Konzentration	Bindung	TYPE
Shape	Drawing						Grit	Concentration	Bond	
14A1		150	8	32	5	8	D64	C100	B48	462886



Form	Zeichnung	D	T	H	U	X	Körnung	Konzentration	Bindung	TYPE
Shape	Drawing						Grit	Concentration	Bond	
14B1		127	8	32	7	5	D54	C125	B48	462503

Diamond Wheels

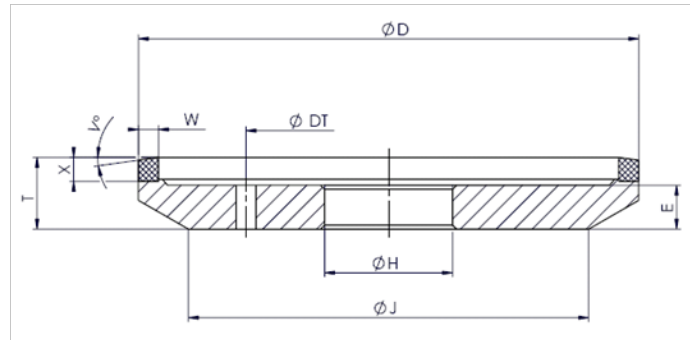
[Index](#)



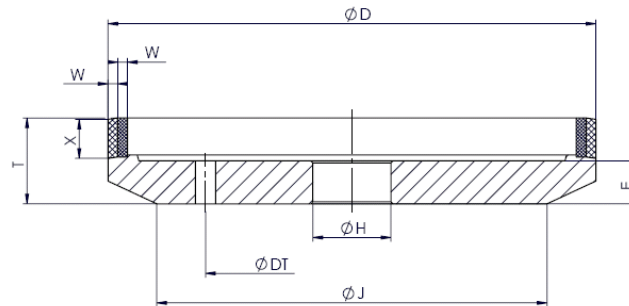
Form	Zeichnung	D	T	H	U	X	V°	Körnung	Konzentration	Bindung	TYPE
Shape	Drawing							Grit	Concentration	Bond	
14M1Z	2411	127	8	32	2,5/2,5	6	5	D126/46	C100/75	B48	462505
14M1Z	2411	127	8	32	2,5/2,5	6	15	D126/46	C100/75	B48	462509
14M1Z	2411	127	8	32	2,5/2,5	6	15	D126/54	C125/100	B48	462514
14M1Z	1348D	150	8	32	2,5/2,5	6	8	D126/46	C100/75	B48	462580
14M1Z	1348	200	10	32	2,5/2,5	6	8	D126/46	C100/75	B48	462587

Diamond Wheels

Index



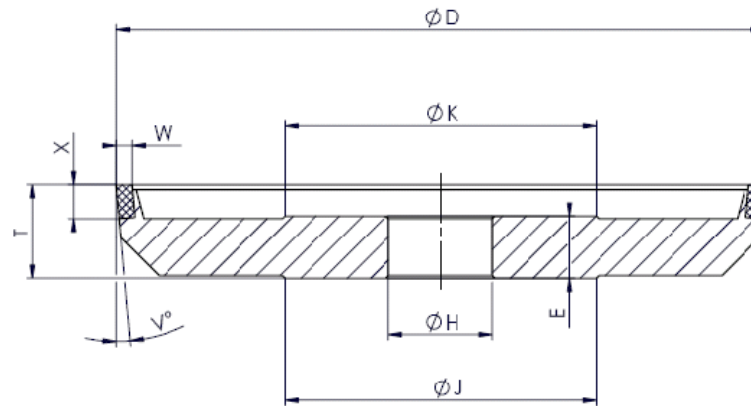
Form Shape	Zeichnung Drawing	D	T	H	W	X	Körnung Grit	Konzentration Concentration	Bindung Bond	TYPE
12A9H	2629F	125	18	32	5	6	D91	C100	B48	462757



Form Shape	Zeichnung Drawing	D	T	H	W	X	Körnung Grit	Konzentration Concentration	Bindung Bond	TYPE
12A9Z	351C	125	18	32	2,5/2,5	6	D126/46	C100/75	B65	167982
12A9Z	351D	125	22	32	2,5/2,5	10	D126/46	C100/75	B65	387531
12A9Z	351D	125	22	32	2,5/2,5	10	D126/46	C125/100	B48	403578

Diamond Wheels

Index



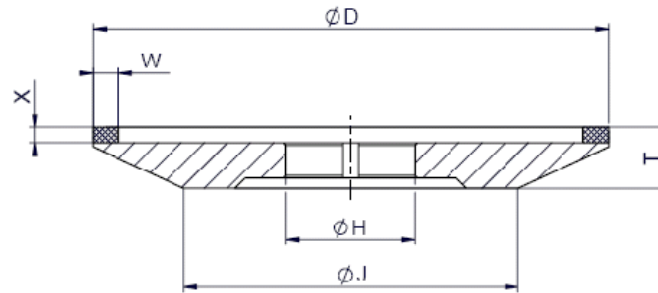
Form	Zeichnung	D	T	H	W	X	Körnung	Konzentration	Bindung	TYPE
Shape	Drawing						Grit	Concentration	Bond	
11B9H	352A	125	18	32	3	6,5	D54	C100	B48	462756

CBN Wheels

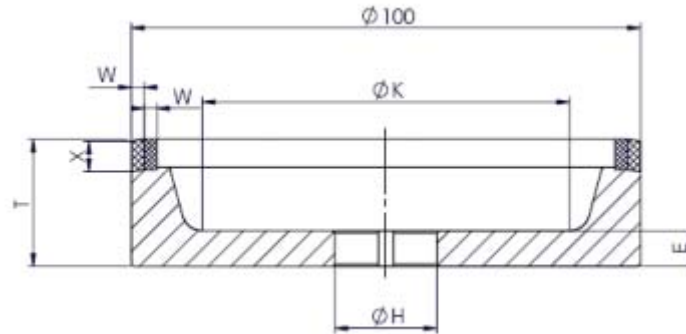
Form	Zeichnung	D	T	H	W	X	Körnung	Konzentration	Bindung	TYPE
Shape	Drawing						Grit	Concentration	Bond	
11B9H	352A	125	18	32	3	6,5	B91	C100	B74	489258
11B9H	352A	125	18	32	3	6,5	B151	C100	B53	379674

Diamond Wheels

Index



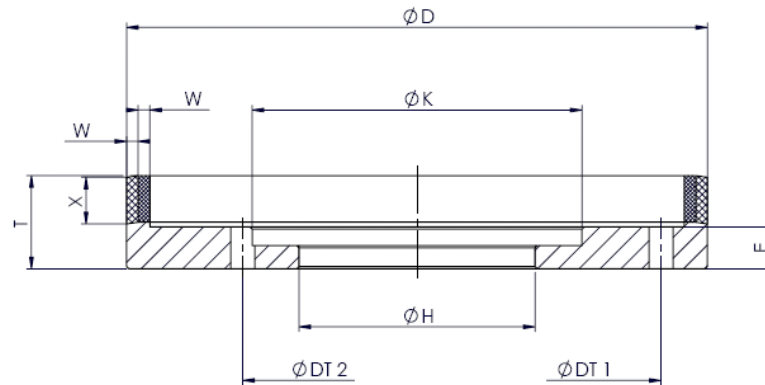
Form Shape	Zeichnung Drawing	D	T	H	W	X	Körnung Grit	Konzentration Concentration	Bindung Bond	TYPE
4A2N	211A	100	12	25	4	3	D54	C75	B74	489286



Form Shape	Zeichnung Drawing	D	T	H	W	X	Körnung Grit	Konzentration Concentration	Bindung Bond	TYPE
6A9Z	219F	100	20	25	2,5/2,5	6	D126/46	C100/75	B65	365225
6A9Z	219	100	24	25	2,5/2,5	10	D126/46	C100/75	B65	462801
6A9Z	219	100	24	25	2,5/2,5	10	D126/46	C125/100	B48	462803

Diamond Wheels

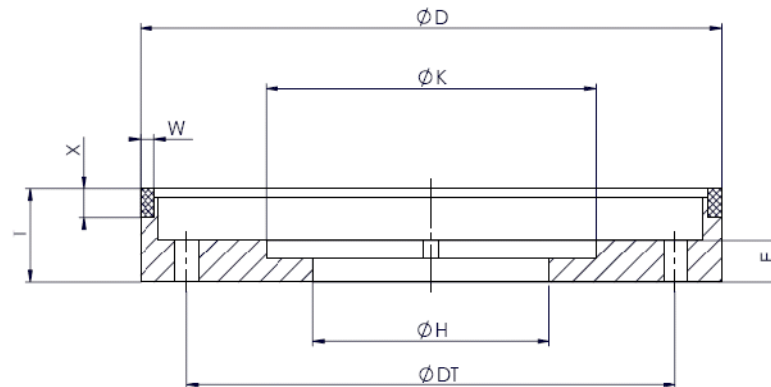
Index



INFO:

This is a SET WHEEL with Face grinding wheel – Seite 31

Form	Zeichnung	D	T	H	W	X	Körnung	Konzentration	Bindung	TYPE
Shape	Drawing						Grit	Concentration	Bond	
6A2ZH	2441A	125	20	50,8	2,5/2,5	6	D126/46	C100/75	B65	462827
6A2ZH	2441B	125	20	50,8	2,5/2,5	10	D126/46	C100/75	B65	462829



INFO:

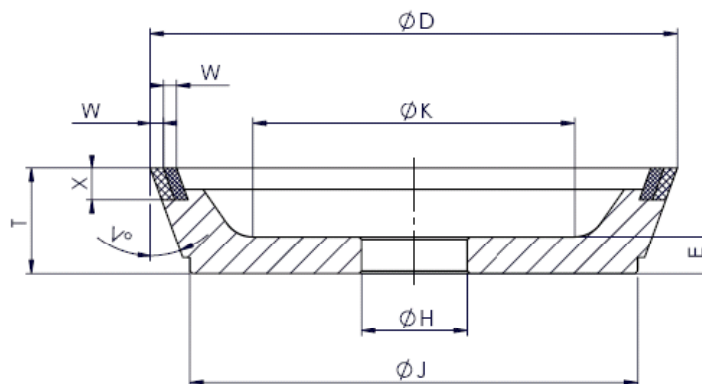
This is a SET WHEEL with Face grinding wheel – Seite 31

Form	Zeichnung	D	T	H	W	X	V°	Körnung	Konzentration	Bindung	TYPE
Shape	Drawing							Grit	Concentration	Bond	
6B9H	2889A	125	20	50,8	3	6	8	D64	C100	B74	462830

Diamond Wheels

[Index](#)

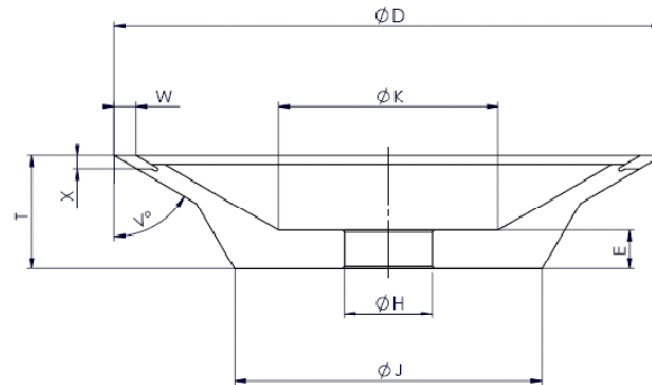
Form	Zeichnung	D	T	H	W	X	V°	Körnung	Konzentration	Bindung	TYPE
Shape	Drawing							Grit	Concentration	Bond	
6A9Z	308S	125	26	25	2,5/2,5	6	8	D126/46	C100/75	B65	462824



Form	Zeichnung	D	T	H	W	X	V°	Körnung	Konzentration	Bindung	TYPE
Shape	Drawing							Grit	Concentration	Bond	
11V9Z	568A	100	20	25	2,5/2,5	6	20	D126/46	C100/75	B65	462804

Diamond Wheels

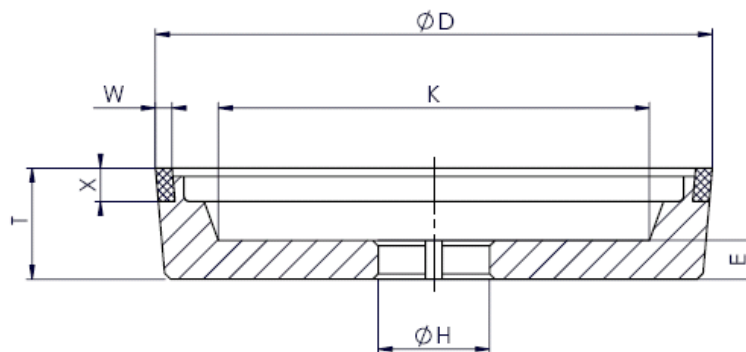
[Index](#)



Form	Zeichnung	D	T	H	W	X	V°	Körnung	Konzentration	Bindung	TYPE
Shape	Drawing							Grit	Concentration	Bond	
11V9N	298A	125	26	25	3	5	5	D54	C100	B53	397048

Diamond Wheels

[Index](#)



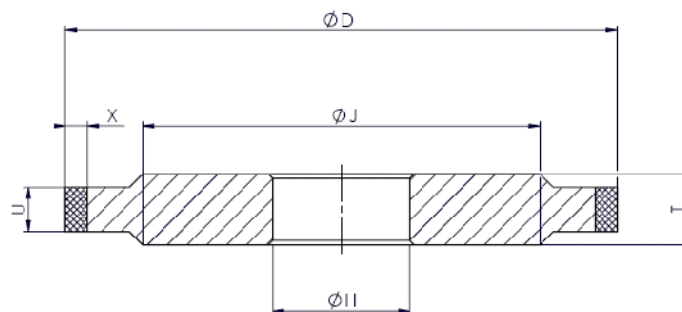
Form	Zeichnung	D	T	H	W	X	V°	Körnung	Konzentration	Bindung	TYPE
Shape	Drawing							Grit	Concentration	Bond	
11V9N	84A	100	20	25	3	6	5	D54	C75	B74	477813

CBN Wheels

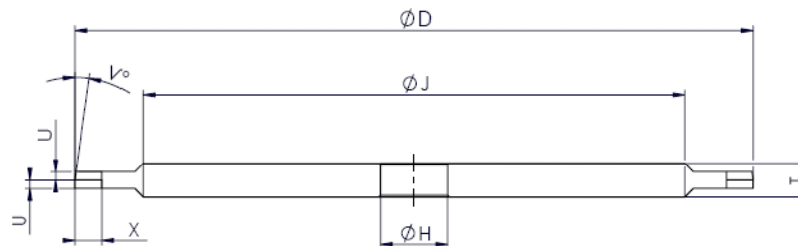
Form	Zeichnung	D	T	H	W	X	V°	Körnung	Konzentration	Bindung	TYPE
Shape	Drawing							Grit	Concentration	Bond	
11V9N	84A	100	20	25	3	6	5	B91	C75	B74	489320

Diamond Wheels

[Index](#)



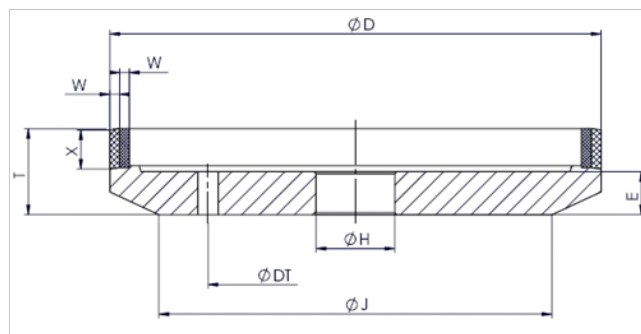
Form Shape	Zeichnung Drawing	D	T	H	U	X	Körnung Grit	Konzentration Concentration	Bindung Bond	TYPE
14A1		150	8	32	5	8	D64	C100	B48	462886



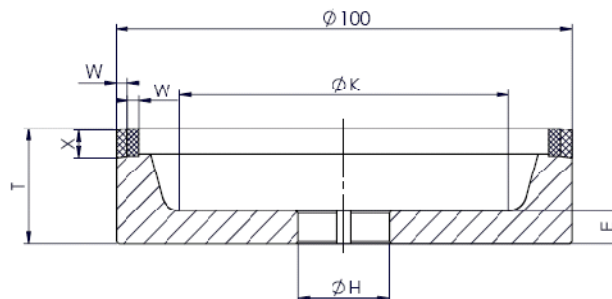
Form Shape	Zeichnung Drawing	D	T	H	U	X	V°	Körnung Grit	Konzentration Concentration	Bindung Bond	TYPE
14M1Z	2411	150	8	32	2,5/2,5	8	8	D126/46	C100/75	B48	462889
14M1Z	2411	175	8	32	2,5/2,5	8	8	D126/46	C100/75	B48	462890
14M1Z	2411E	200	8	32	2,5/2,5	8	8	D126/46	C100/75	B48	462891
14M1Z	2411E	200	8	32	2,5/2,5	8	8	D91/35	C100/75	B48	462892

Diamond Wheels

[Index](#)



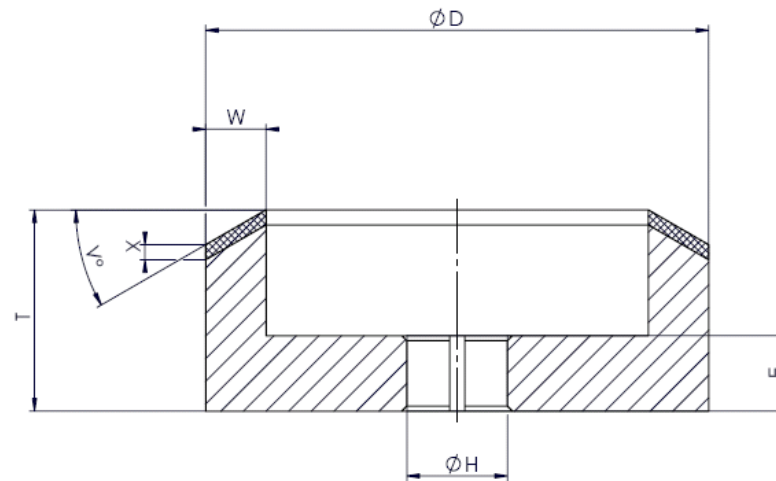
Form	Zeichnung	D	T	H	W	X	V°	Körnung	Konzentration	Bindung	TYPE
Shape	Drawing							Grit	Concentration	Bond	
12A9Z	351C	125	18	25	2,5/2,5	6	8	D126/46	C100/75	B65	167982



Form	Zeichnung	D	T	H	W	X	V°	Körnung	Konzentration	Bindung	TYPE
Shape	Drawing							Grit	Concentration	Bond	
6A9Z	219F	100	20	25	2,5/2,5	6	8	D126/46	C100/75	B65	365225

Diamond Wheels

[Index](#)

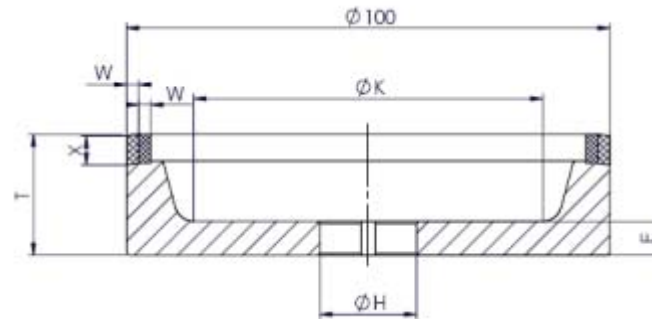


Form Shape	Zeichnung Drawing	D	T	H	W	X	V°	Körnung Grit	Konzentration Concentration	Bindung Bond	TYPE
6V5N	5169i	100	20	25	5	6	15	D64	C75	B74	463025

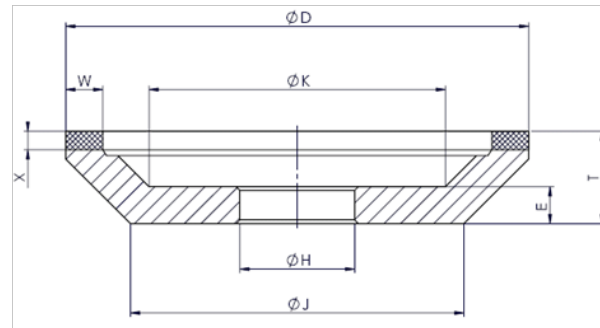
BACK GRINDING UNIVERSAL GRINDING MACHINES

Diamond Wheels

[Index](#)



Form Shape	Zeichnung Drawing	D	T	H	W	X	V°	Körnung Grit	Konzentration Concentration	Bindung Bond	TYPE
6A9Z	219P	100	20	20	2,5/2,5	6	8	D126/46	C100/75	B65	462733
6A9Z	219o	125	20	20	2,5/2,5	6	8	D126/46	C100/75	B65	462734



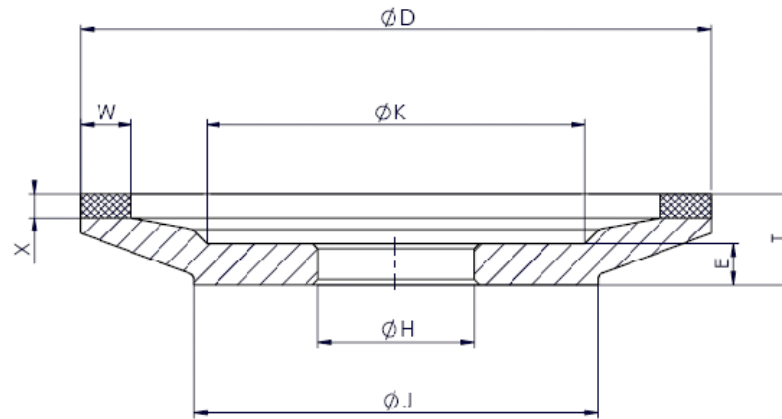
Form Shape	Zeichnung Drawing	D	T	H	W	X	Körnung Grit	Konzentration Concentration	Bindung Bond	TYPE
12A2D		100	27	20	6	4	D64	C50	B52	462949
12A2D		100	27	20	6	4	D126	C75	B52	462950

BACK GRINDING

UNIVERSAL GRINDING MACHINES

Diamond Wheels

Index



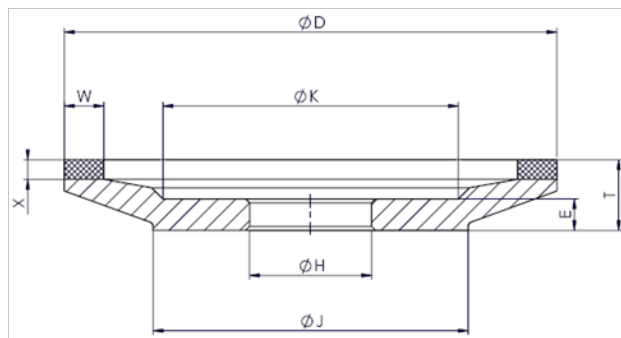
Form Shape	Zeichnung Drawing	D	T	H	U	W	X	Körnung Grit	Konzentration Concentration	Bindung Bond	TYPE
12C2F		125	23	20	5	5	4	D46	C50	B52	477806
12C2F		125	23	20	5	5	4	D64	C50	B52	477805
12C2F		125	23	20	5	5	4	D126	C50	B52	477804

BACK GRINDING

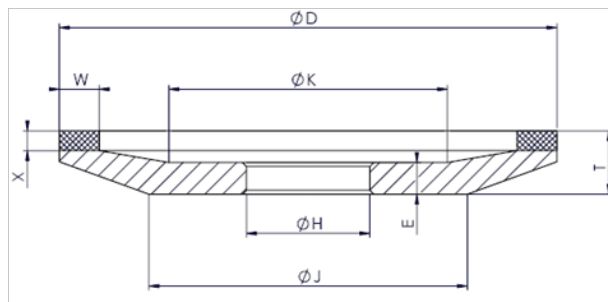
UNIVERSAL GRINDING MACHINES

CBN Wheels

Index



Form Shape	Zeichnung Drawing	D	T	H	U	W	X	Körnung Grit	Konzentration Concentration	Bindung Bond	TYPE
12C2F		125	23	20	5	5	4	B91	C75	B45	646778
12C2F		125	23	20	5	5	4	B151	C75	B45	641839



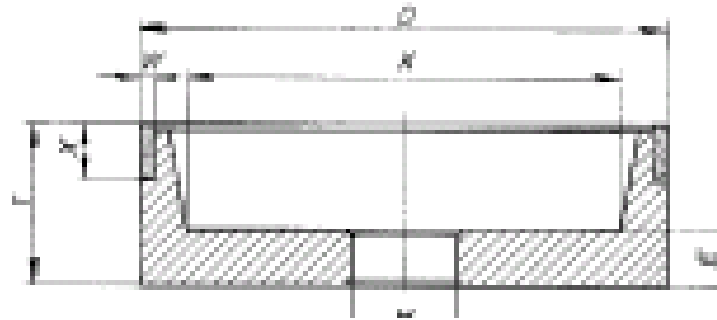
Form Shape	Zeichnung Drawing	D	T	H	W	X	Körnung Grit	Konzentration Concentration	Bindung Bond	TYPE
12A2		100	12	20	5	2	B126	C50	B54	463057
12A2		125	16	20	5	2	B126	C50	B54	463058

BACK GRINDING

UNIVERSAL GRINDING MACHINES

CBN Wheels

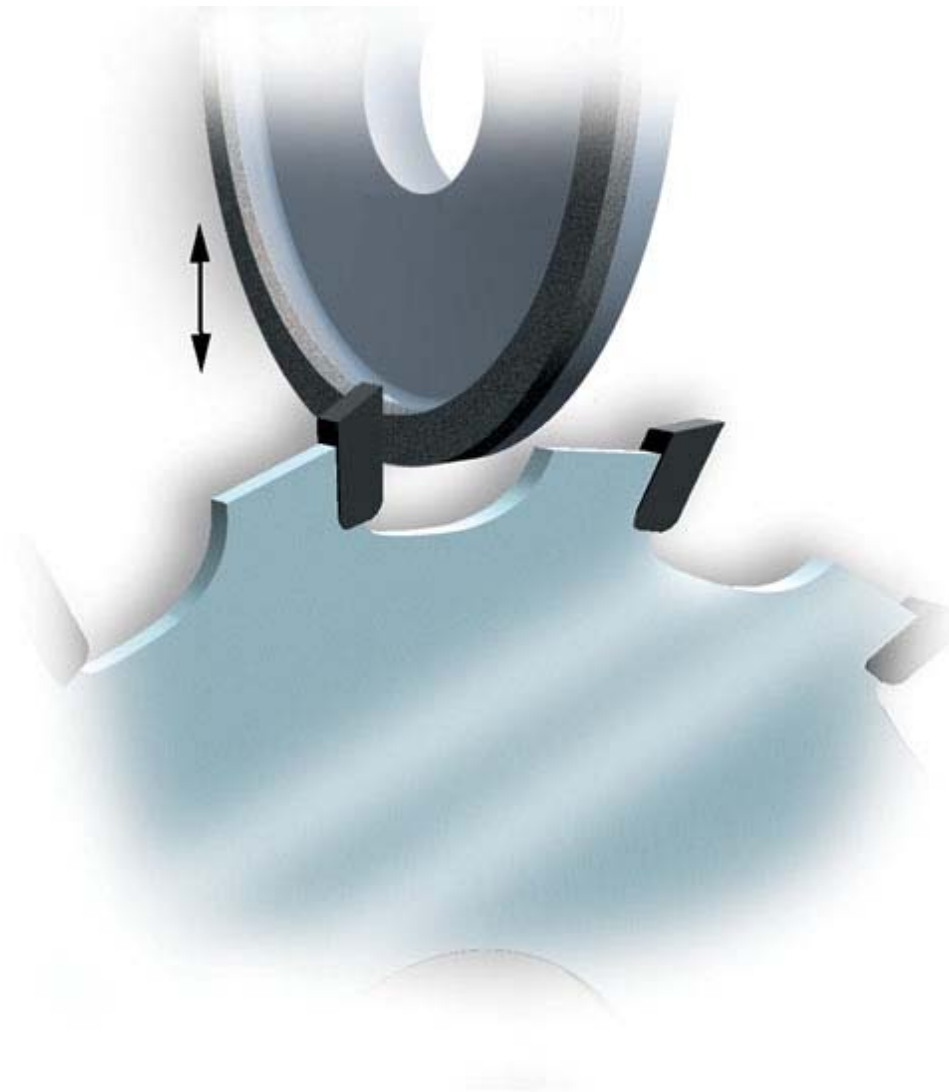
[Index](#)



INFO:

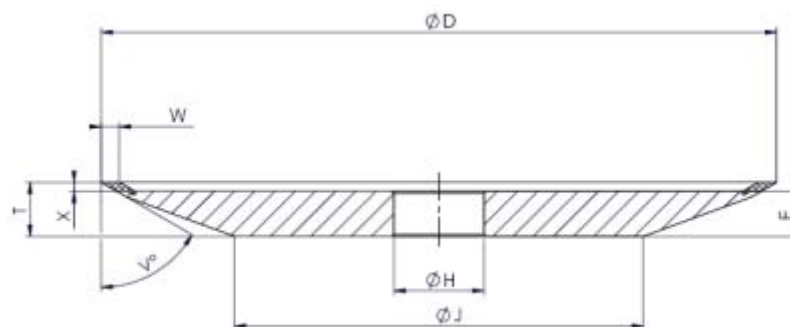
Grinding of Hydro device on
Schneeberger Centromat
and Ledinek machines

Form Shape	Zeichnung Drawing	D	T	H	W	X	Körnung Grit	Konzentration Concentration	Bindung Bond	TYPE
6A9		80	30	20	3	10	B126	C100	B54	362953
6A9	4097u	100	30	20	3	10	B151	C100	B54	486302
6A9		100	30	20	2	10	B91	C50	B54	408098
6A9		125	30	20	2	10	B91	C50	B54	474974

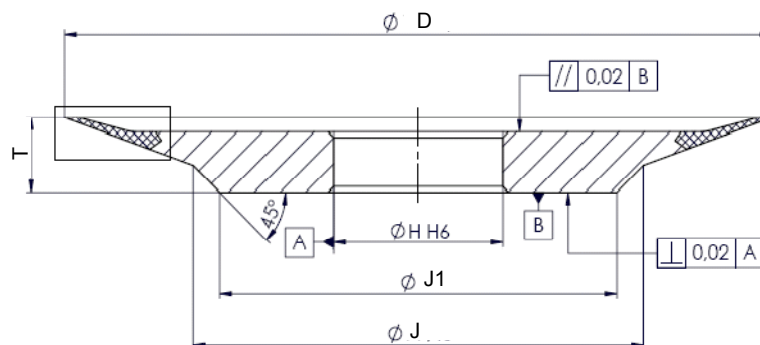


Diamond Wheels

[Index](#)



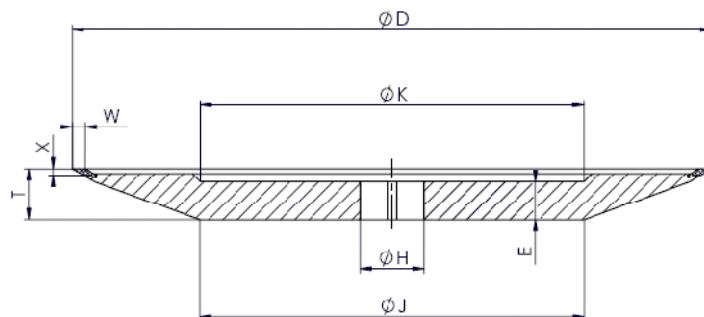
Form Shape	Zeichnung Drawing	D	T	H	W	X	V°	Körnung	Konzentration	Bindung	TYPE
								Grit	Concentration	Bond	
4V2	4867E	150	12	32	4	2	30	D46	C125	B48	462768
4V2	4867E	150	12	32	4	2	30	D76	C125	B48	462769



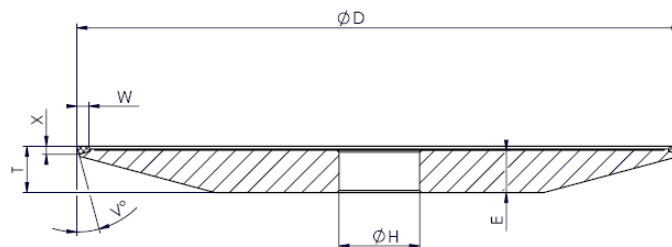
Form Shape	Zeichnung Drawing	D	T	H	W	X	V°	Körnung	Konzentration	Bindung	TYPE
								Grit	Concentration	Bond	
3V9	8497E	150	13	32	2,5	5,5	70	D46	100	B	578936
3V9	8497E	150	13	32	2,5	5,5	70	D76	100	B	578940
3V9	8497C	200	13	32	2,5	5,5	70	D46	100	B	543102
3V9	8497C	200	13	32	2,5	5,5	70	D76	100	B	572893

Diamond Wheels

[Index](#)



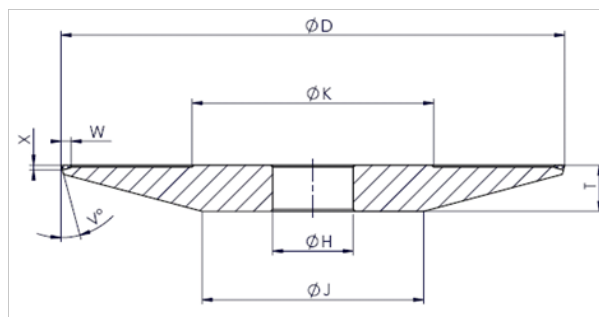
Form Shape	Zeichnung Drawing	D	T	H	W	X	V°	Körnung Grit	Konzentration Concentration	Bindung Bond	TYPE
12V2	750J	200	13	32	4	2	30	D46	C125	B48	462654
12V2	750J	200	13	32	4	2	30	D28	C100	B42	462655



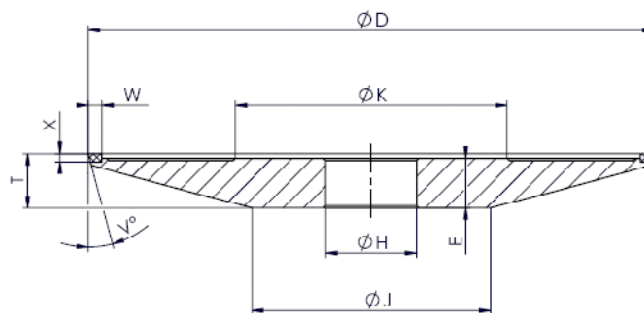
Form Shape	Zeichnung Drawing	D	T	H	W	X	V°	Körnung Grit	Konzentration Concentration	Bindung Bond	TYPE
4B9	1152A	150	11,5	32	3	1,5	15	D64	C100	B48	462642
4B9	1152C	150	12	32	3	2	15	D91	C125	B48	462646

Diamond Wheels

[Index](#)



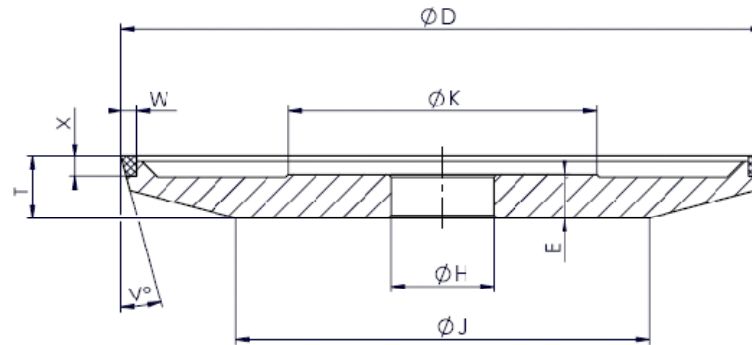
Form	Zeichnung	D	T	H	W	X	V°	Körnung	Konzentration	Bindung	TYPE
Shape	Drawing							Grit	Concentration	Bond	
4B9	346A	125	11,5	32	2,5	1,2	15	D54	C125	B48	462784
4B9	346A	125	11,5	32	2,5	1,2	15	D76	C125	B48	462785
4B9	346A	125	11,5	32	2,5	1,2	15	D54	C75	B70	369110
4B9	348i	125	12	32	3	2	15	D54	C75	B70	583911



Form	Zeichnung	D	T	H	W	X	V°	Körnung	Konzentration	Bindung	TYPE
Shape	Drawing							Grit	Concentration	Bond	
4B9	348A	125	12	32	2,5	1,8	15	B91	C75	B54	462789

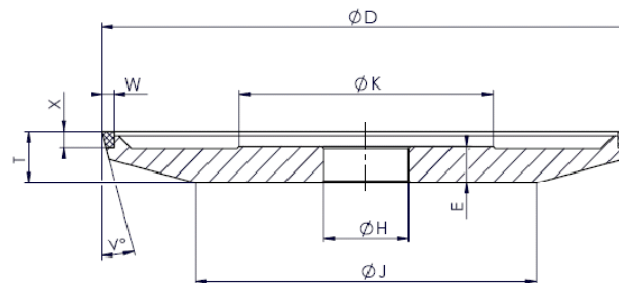
Diamond Wheels

Index



Form	Zeichnung	D	T	H	W	X	V°	Körnung	Konzentration	Bindung	TYPE
Shape	Drawing							Grit	Concentration	Bond	
4B9	347B	125	12	32	3	3,8	15	D54	C125	B48	462788
4B9	347A	125	14	32	3	3,8	15	D54	C75	B70	665040

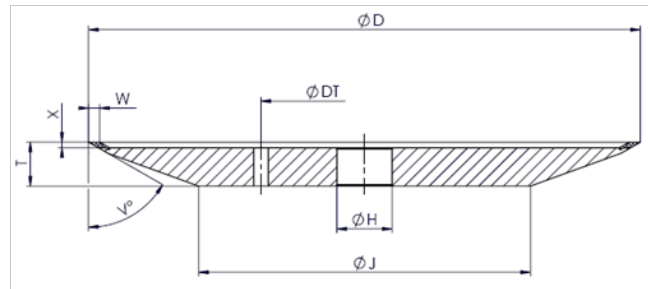
CBN Wheels



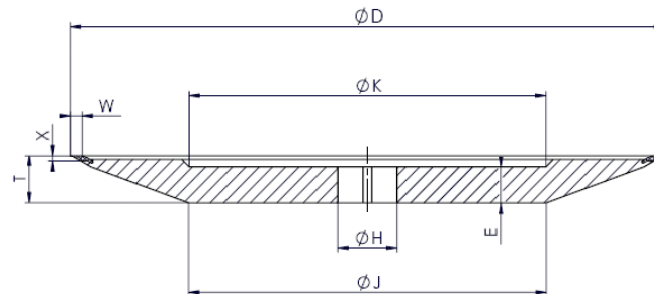
Form	Zeichnung	D	T	H	W	X	V°	Körnung	Konzentration	Bindung	TYPE
Shape	Drawing							Grit	Concentration	Bond	
4B9	347A	125	14	32	3	3,8	15	B91	C75	B54	462793

Diamond Wheels

Index



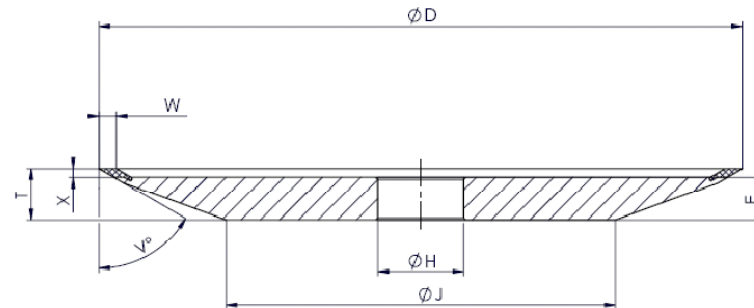
Form	Zeichnung	D	T	H	W	X	V°	Körnung	Konzentration	Bindung	TYPE
Shape	Drawing							Grit	Concentration	Bond	
4V2H	2890C	200	13	32	4	2	30	D46	C125	B48	462758
4V2H	2890C	200	13	32	4	2	30	D76	C125	B48	462760



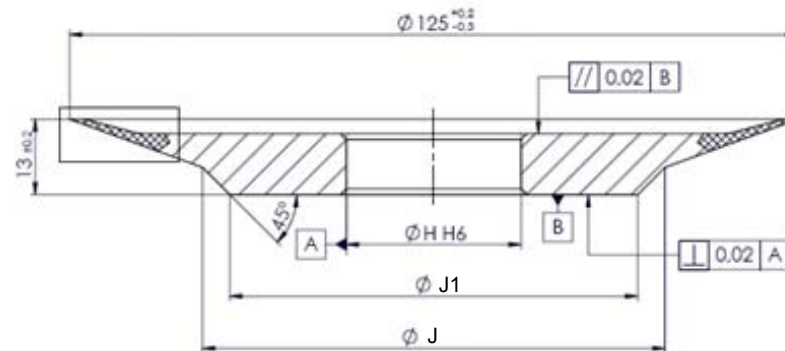
Form	Zeichnung	D	T	H	W	X	V°	Körnung	Konzentration	Bindung	TYPE
Shape	Drawing							Grit	Concentration	Bond	
12V2	750J	200	13	32	4	2	30	D46	C125	B48	462766

Diamond Wheels

Index



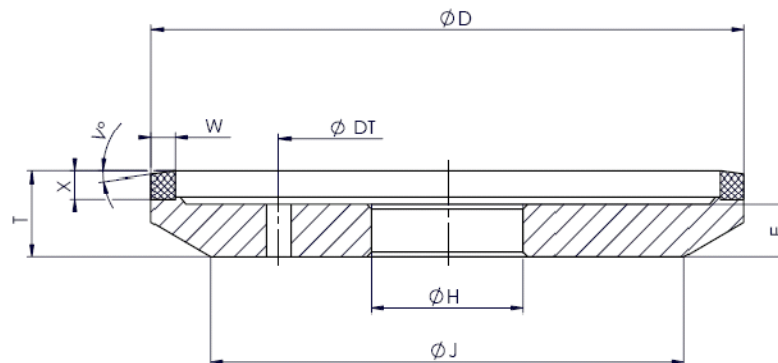
Form	Zeichnung	D	T	H	W	X	V°	Körnung	Konzentration	Bindung	TYPE
Shape	Drawing							Grit	Concentration	Bond	
4V2	4867D	125	12	32	4	2	30	D46	C125	B48	462768
4V2	4867D	125	12	32	4	2	30	D76	C125	B48	462769



Form	Zeichnung	D	T	H	W	X	V°	Körnung	Konzentration	Bindung	TYPE
Shape	Drawing							Grit	Concentration	Bond	
3V9	8497	125	13	32	3	5,5	70	D46	100	B	on request
3V9	8497 B	200	13	32	3	5,5	70	D46	100	B	520530

Diamond Wheels

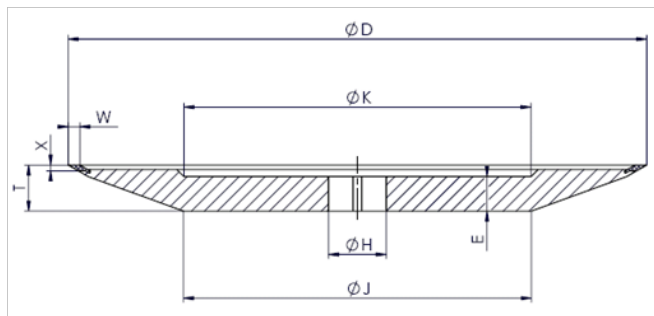
[Index](#)



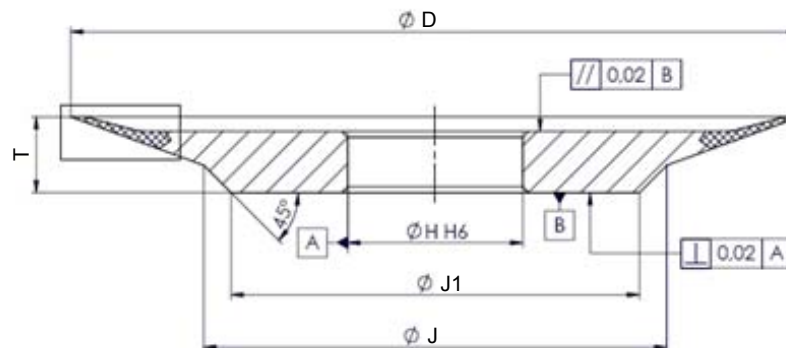
Form Shape	Zeichnung Drawing	D	T	H	W	X	Körnung Grit	Konzentration Concentration	Bindung Bond	TYPE
12A9H	2629F	125	18	32	5	6	D91	C100	B48	462757

Diamond Wheels

Index



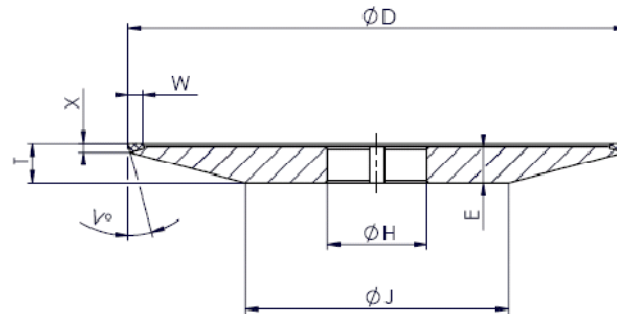
Form	Zeichnung	D	T	H	W	X	V°	Körnung	Konzentration	Bindung	TYPE
Shape	Drawing							Grit	Concentration	Bond	
12V2N	750M	150	12	25	4	2	30	D46	C125	B48	462651
12V2N	750M	150	12	25	4	2	30	D76	C125	B48	462653
12V2N	750F	125	11,5	25	4	2	30	D46	C125	B48	462831
12V2N	750F	125	11,5	25	4	2	30	D76	C125	B48	462832
12V2N	750A	100	10	25	4	2	30	D46	C125	B48	462840



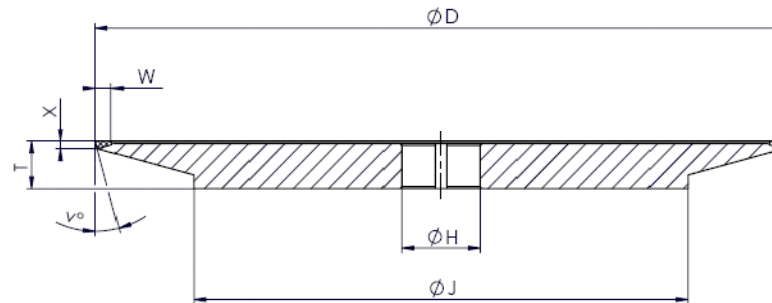
Form	Zeichnung	D	T	H	W	X	V°	Körnung	Konzentration	Bindung	TYPE
Shape	Drawing							Grit	Concentration	Bond	
3V9	8497A	125	13	25	2,5	5,5	70	D46	100	B	563857

Diamond Wheels

Index



Form	Zeichnung	D	T	H	W	X	V°	Körnung	Konzentration	Bindung	TYPE
Shape	Drawing							Grit	Concentration	Bond	
4B9N	218A	100	8	25	3	1,8	15	D54	C100	B52	462845
4B9N	218A	100	8	25	3	1,8	15	D54	C75	B70	632932



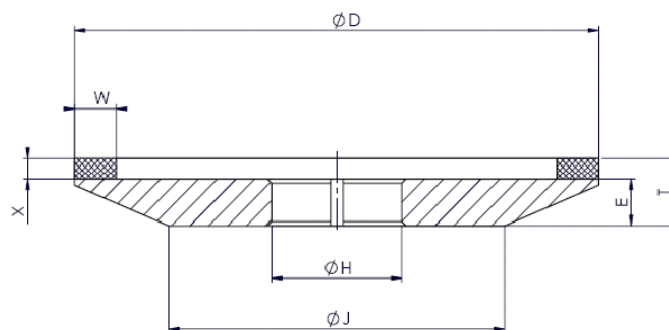
INFO:

This is a SET WHEEL together with back grinding wheel – page 12

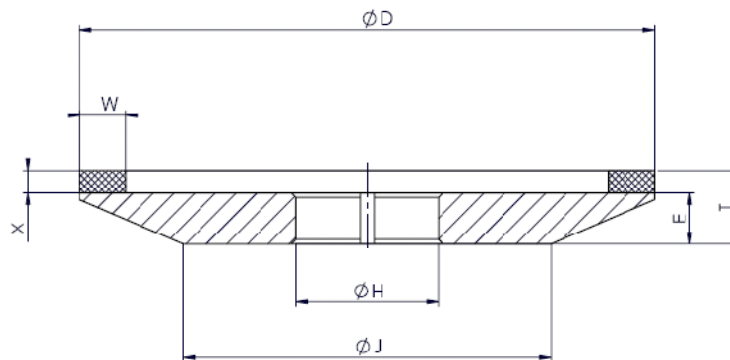
Form	Zeichnung	D	T	H	W	X	V°	Körnung	Konzentration	Bindung	TYPE
Shape	Drawing							Grit	Concentration	Bond	
4B9H	218F	175	17	50,8	4	4	15	D76	C125	B48	462836

Diamond Wheels

Index



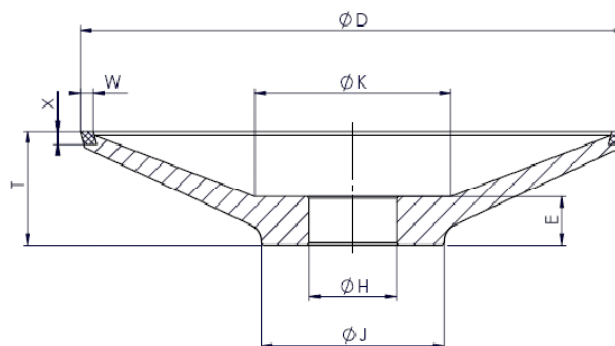
Form Shape	Zeichnung Drawing	D	T	H	W	X	Körnung Grit	Konzentration Concentration	Bindung Bond	TYPE
4A2N	150A	100	8	25	4	1	D64	C100	B52	462839



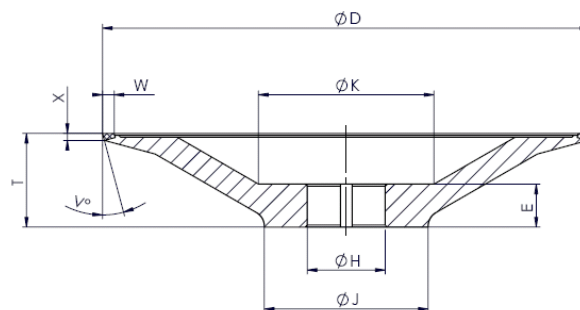
Form Shape	Zeichnung Drawing	D	T	H	W	X	Körnung Grit	Konzentration Concentration	Bindung Bond	TYPE
4A2N	211A	100	12	25	4	3	D54	C75	B74	489286

Diamond Wheels

Index



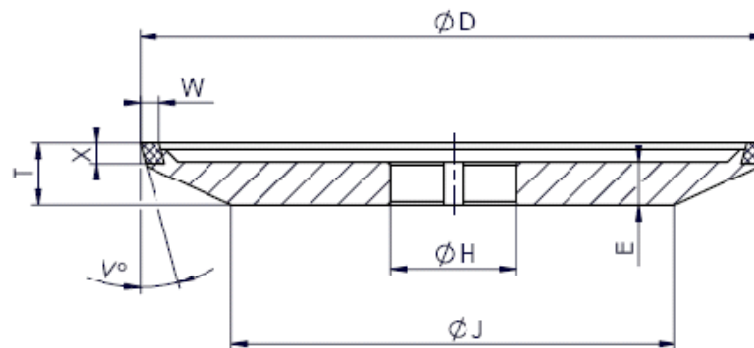
Form	Zeichnung	D	T	H	W	X	V°	Körnung	Konzentration	Bindung	TYPE
Shape	Drawing							Grit	Concentration	Bond	
12V9N	300A	125	26	25	3	3	15	D54	C75	B48	462834



Form	Zeichnung	D	T	H	W	X	V°	Körnung	Konzentration	Bindung	TYPE
Shape	Drawing							Grit	Concentration	Bond	
12B9N	386A	125	24	25	3	1,8	15	D54	C75	B48	462833

Diamond Wheels

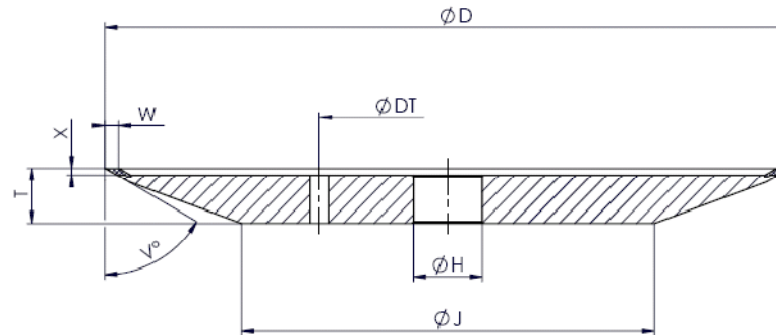
[Index](#)



Form	Zeichnung	D	T	H	W	X	V°	Körnung	Konzentration	Bindung	TYPE
Shape	Drawing							Grit	Concentration	Bond	
4V9N	77A	100	10	25	3	3,3	15	D54	C100	B52	462848

Diamond Wheels

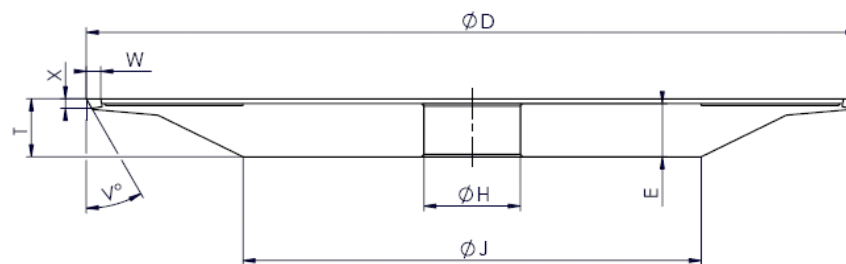
[Index](#)



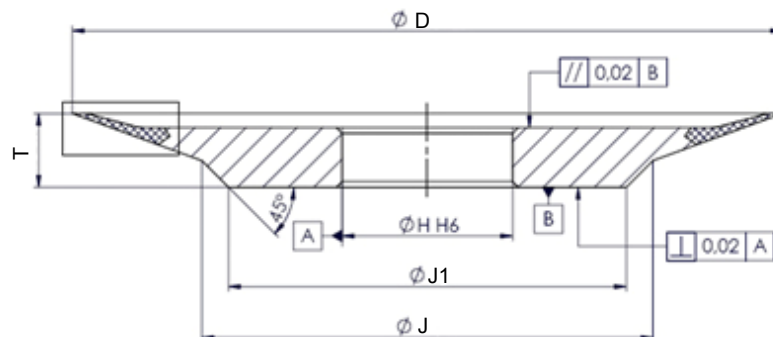
Form	Zeichnung	D	T	H	W	X	V°	Körnung	Konzentration	Bindung	TYPE
Shape	Drawing							Grit	Concentration	Bond	
4V2H	2890J	150	13	32	3	2	30	D46	C125	B48	462895
4V2H	2890J	150	13	32	3	2	30	D76	C125	B48	462896
4V2H	2890L	160	13	32	4	2	30	D46	C125	B48	462897
4V2H	2890L	160	13	32	4	2	30	D76	C125	B48	462898
4V2H	2890C	200	13	32	4	2	30	D28	C100	B42	332128
4V2H	2890C	200	13	32	4	2	30	D46	C125	B48	379577

Diamond Wheels

[Index](#)



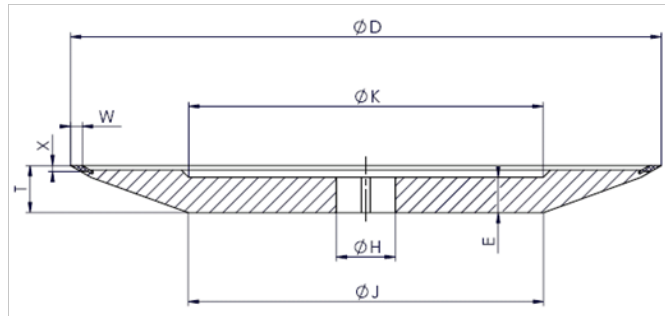
Form	Zeichnung	D	T	H	W	X	V°	Körnung	Konzentration	Bindung	TYPE
Shape	Drawing							Grit	Concentration	Bond	
4V9	343M	160	12	32	3	3	30	D46	C100	B70	333195



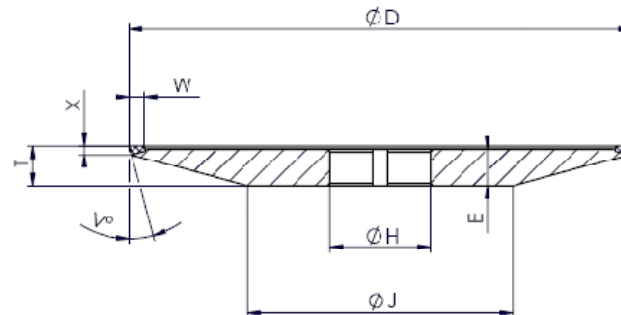
Form	Zeichnung	D	T	H	W	X	V°	Körnung	Konzentration	Bindung	TYPE
Shape	Drawing							Grit	Concentration	Bond	
3V9	8497 E	150	13	32	2,5	5,5	70	D46	100	B	578936
3V9	8497 C	200	13	32	2,5	5,5	70	D46	100	B	543102

Diamond Wheels

Index



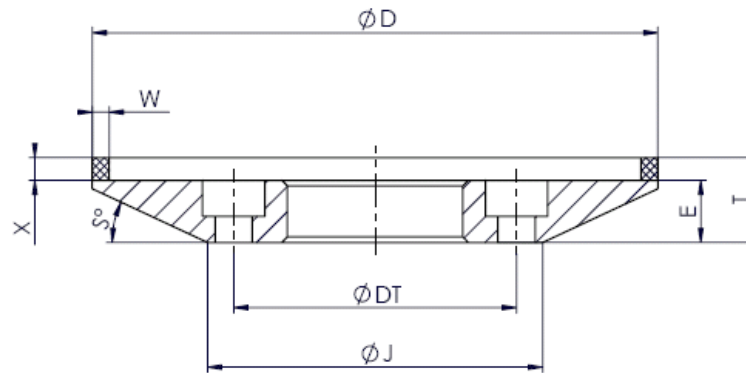
Form	Zeichnung	D	T	H	W	X	V°	Körnung	Konzentration	Bindung	TYPE
Shape	Drawing							Grit	Concentration	Bond	
12V2N	750A	100	10	25	4	2	30	D46	C100	B48	463026
12V2N	750A	100	10	25	4	2	30	D76	C125	B48	463027
12V2N	750M	150	12	25	4	2	30	D76	C125	B48	463653



Form	Zeichnung	D	T	H	W	X	V°	Körnung	Konzentration	Bindung	TYPE
Shape	Drawing							Grit	Concentration	Bond	
4B9N	218A	100	8	25	3	1,8	15	D46	C125	B48	463028
4B9N	218A	100	8	25	3	1,8	15	D54	C75	B70	632932
4B9N	218A	100	8	25	3	1,8	15	D76	C125	B48	463029
4B9N	218B	125	8	25	3	1,8	15	D46	C125	B48	463031
4B9N	218B	125	8	25	3	1,8	15	D76	C125	B48	463032

CBN Wheels

Index



INFO:

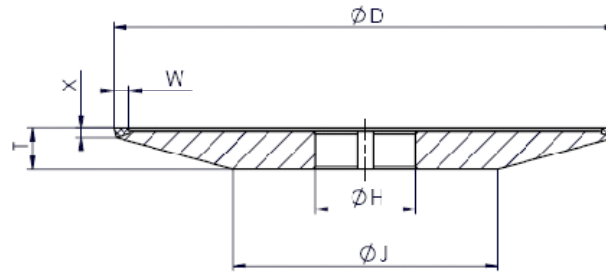
For grinding of the chip surface of milling cutters made of HSS

Form	Zeichnung	D	T	H	W	X	Körnung	Konzentration	Bindung	TYPE
Shape	Drawing						Grit	Concentration	Bond	
4A9B	2296A	150	18	20	2	3,3	B126	C75	B74	216613

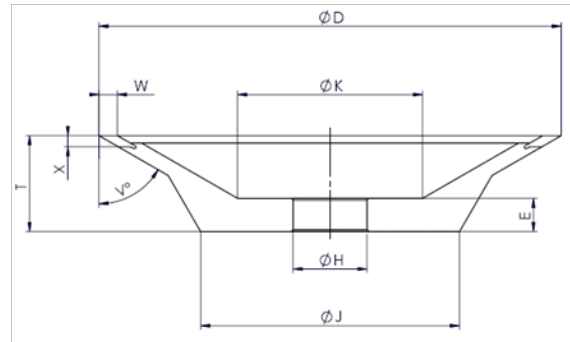
FACE GRINDING UNIVERSAL GRINDING MACHINES

Diamond Wheels

[Index](#)



Form Shape	Zeichnung Drawing	D	T	H	W	X	V°	Körnung Grit	Konzentration Concentration	Bindung Bond	TYPE
4B9	218j	100	8	20	3	1,8	15	D54	C75	B52	462729
4B9	218i	125	8	20	3	1,8	15	D54	C75	B52	462730

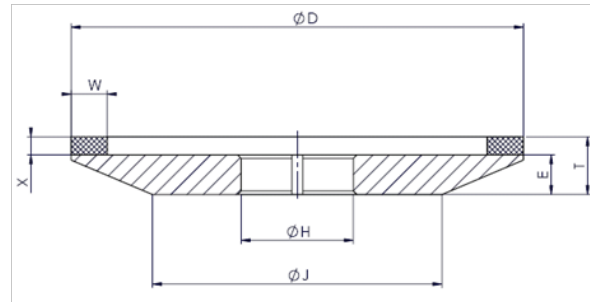


Form Shape	Zeichnung Drawing	D	T	H	W	X	V°	Körnung Grit	Konzentration Concentration	Bindung Bond	TYPE
12V2	298A	125	26	20	5	3	30	D64	C50	B52	356438
12V2	298B	125	26	20	8	4	30	D64	C50	B52	436382

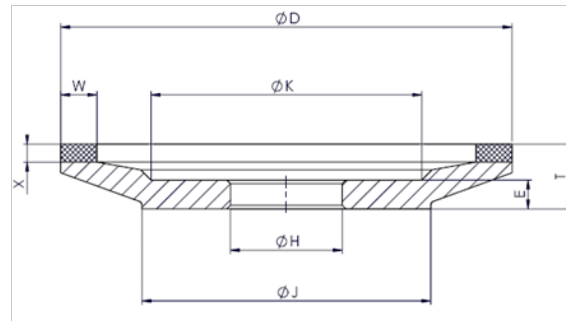
FACE GRINDING UNIVERSAL GRINDING MACHINES

Diamond Wheels

[Index](#)



Form Shape	Zeichnung Drawing	D	T	H	W	X	Körnung Grit	Konzentration Concentration	Bindung Bond	TYPE
4A2	567A	125	10	20	5	2	D64	C50	B52	784176
4A2	567	100	8	20	5	2	D64	C50	B52	306651

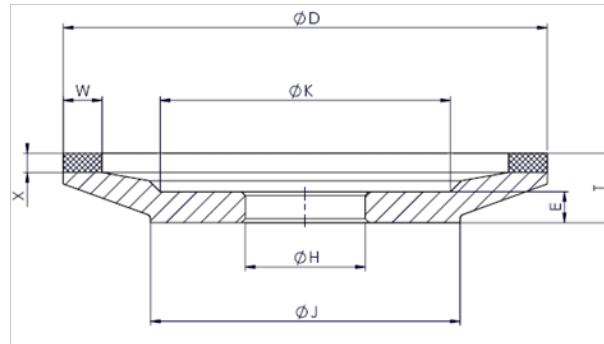


Form Shape	Zeichnung Drawing	D	T	H	U	W	X	Körnung Grit	Konzentration Concentration	Bindung Bond	TYPE
12C2F		125	23	20	5	5	4	D46	C50	B52	477806
12C2F		125	23	20	5	5	4	D64	C50	B52	477805
12C2F		125	23	20	5	5	4	D126	C50	B52	477804

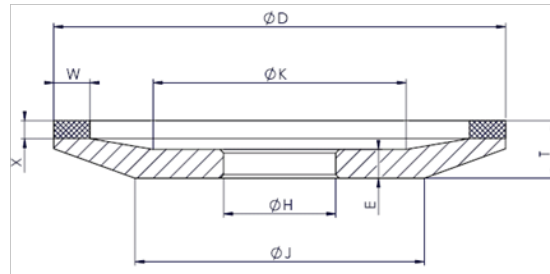
FACE GRINDING UNIVERSAL GRINDING MACHINES

CBN Wheels

Index



Form	Zeichnung	D	T	H	W	X	Körnung	Konzentration	Bindung	TYPE
Shape	Drawing						Grit	Concentration	Bond	
12A2		100	12	20	5	2	B126	C50	B54	463057
12A2		125	16	20	5	2	B126	C50	B54	463058

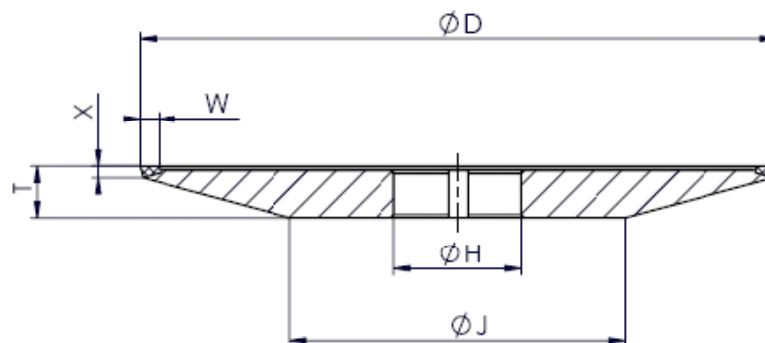


Form	Zeichnung	D	T	H	U	W	X	Körnung	Konzentration	Bindung	TYPE
Shape	Drawing							Grit	Concentration	Bond	
12C2F		125	23	20	5	5	4	B91	C75	B45	646778
12C2F		125	23	20	5	5	4	B151	C75	B45	641839

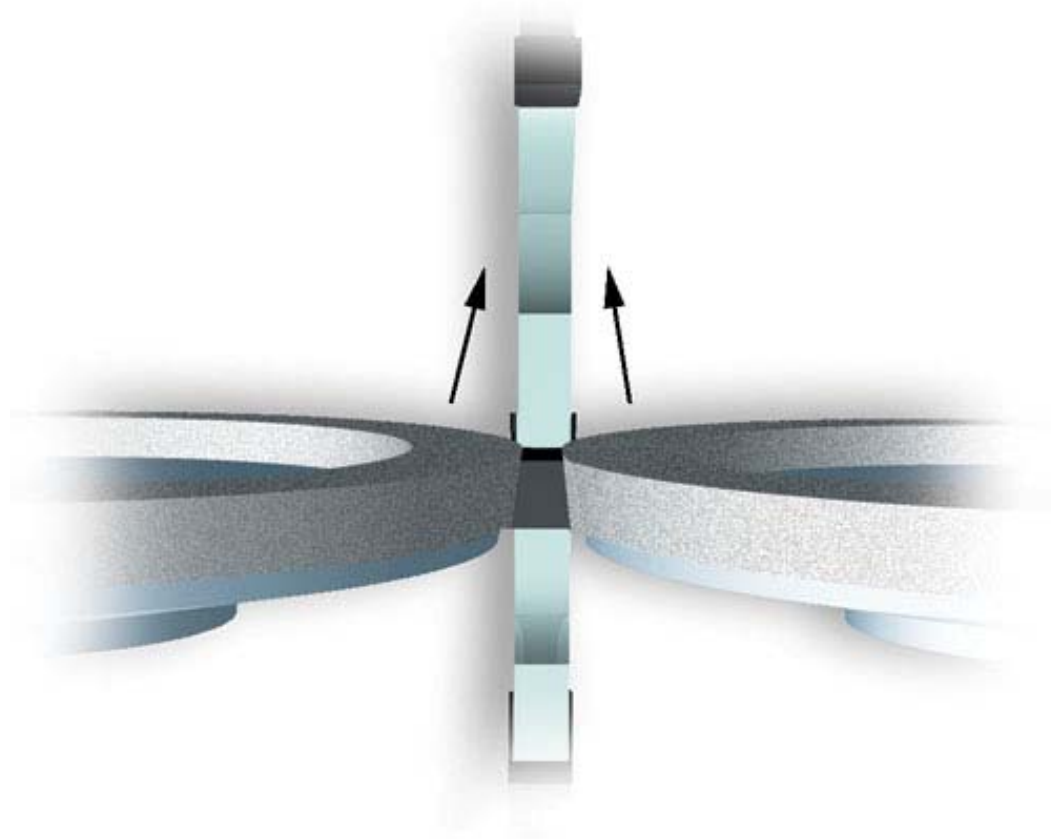
FACE GRINDING UNIVERSAL GRINDING MACHINES

CBN Wheels

Index

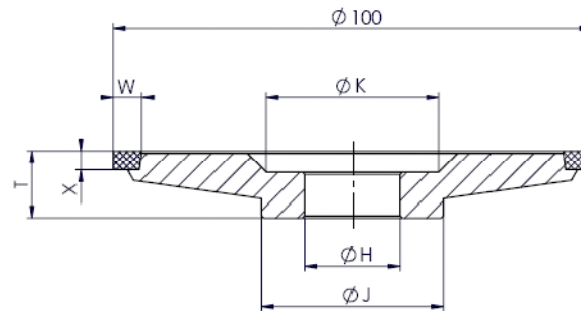


Form	Zeichnung	D	T	H	W	X	V°	Körnung	Konzentration	Bindung	TYPE
Shape	Drawing							Grit	Concentration	Bond	
4B9	218j	100	8	20	3	1,8	15	B91	C75	B54	462731
4B9	218i	125	8	20	3	1,8	15	B91	C75	B54	462732

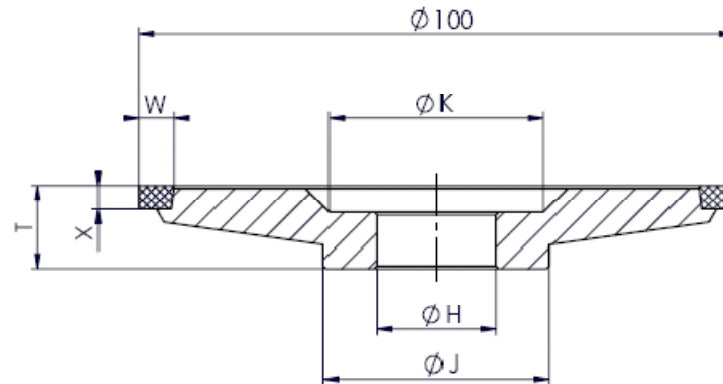


Diamond Wheels

Index



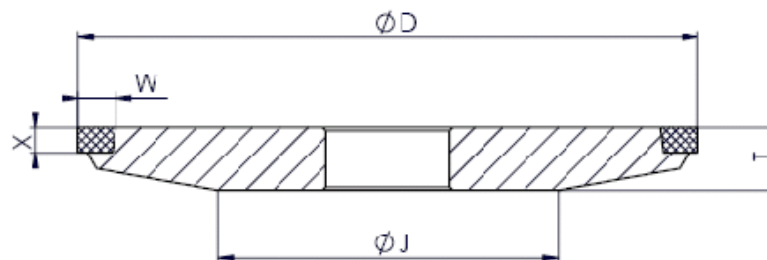
Form	Zeichnung	D	T	H	W	X	Körnung	Konzentration	Bindung	TYPE
Shape	Drawing						Grit	Concentration	Bond	
12B9N	199B	76	14	20	4,5	4	D91	C50	B52	462658



Form	Zeichnung	D	T	H	W	X	Körnung	Konzentration	Bindung	TYPE
Shape	Drawing						Grit	Concentration	Bond	
12B9N	200F	100	14	20	4	6	D91	C50	B52	462668

Diamond Wheels

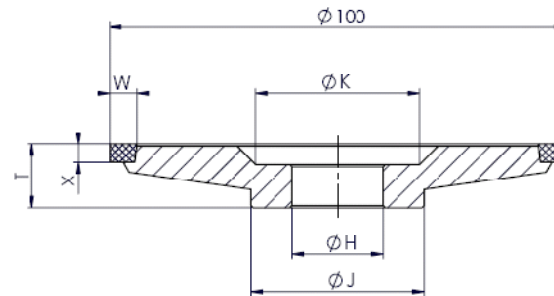
[Index](#)



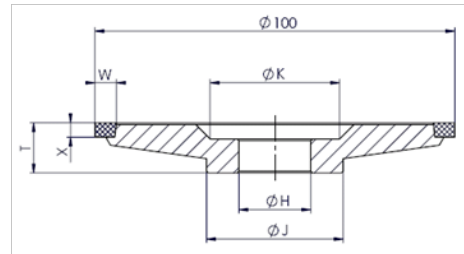
Form Shape	Zeichnung Drawing	D	T	H	W	X	Körnung Grit	Konzentration Concentration	Bindung Bond	TYPE
4B9	345J	80	10	32	4	5	D91	C50	B52	462794
4B9	345B	100	10	32	6	4	D91	C50	B52	462796

Diamond Wheels

Index



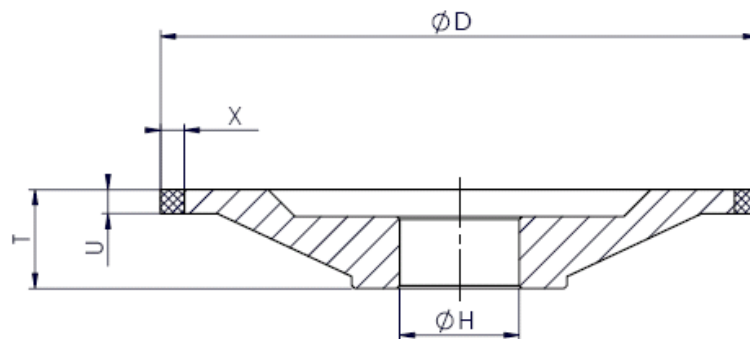
Form Shape	Zeichnung Drawing	D	T	H	W	X	Körnung Grit	Konzentration Concentration	Bindung Bond	TYPE
12B9N	200F	100	14	20	4	6	D91	C50	B52	462668
12B9N	200A	100	14	20	4,5	4	D91	C50	B52	462863



Form Shape	Zeichnung Drawing	D	T	H	W	X	Körnung Grit	Konzentration Concentration	Bindung Bond	TYPE
12B9N	199B	76	14	20	4,5	4	D91	C50	B52	462658

Diamond Wheels

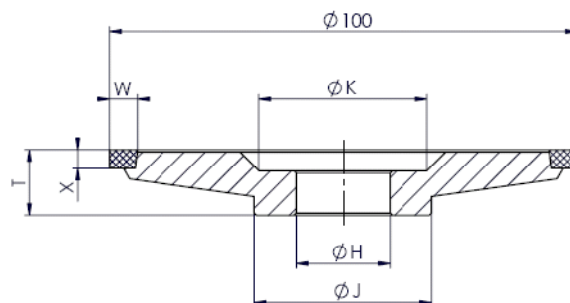
[Index](#)



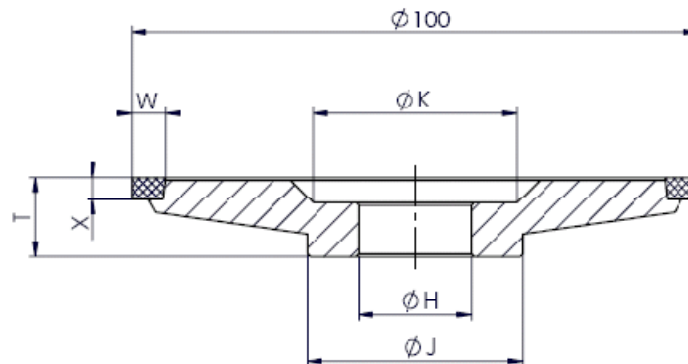
Form	Zeichnung	D	T	H	W	X	Körnung	Konzentration	Bindung	TYPE
Shape	Drawing						Grit	Concentration	Bond	
12A1N	3A	100	16,5	20	4	4	D91	C50	B52	462861

Diamond Wheels

Index



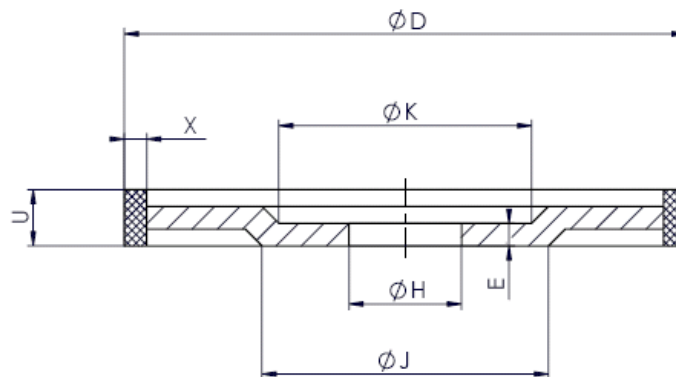
Form Shape	Zeichnung Drawing	D	T	H	W	X	Körnung Grit	Konzentration Concentration	Bindung Bond	TYPE
12B9N	199B	76	14	20	4,5	4	D64	C75	B74	15810



Form Shape	Zeichnung Drawing	D	T	H	W	X	Körnung Grit	Konzentration Concentration	Bindung Bond	TYPE
12B9N	200D	100	14	32	4,5	4	D64	C75	B74	331135
12B9N	200A	100	14	20	4,5	4	D64	C75	B74	840511

Diamond Wheels

[Index](#)

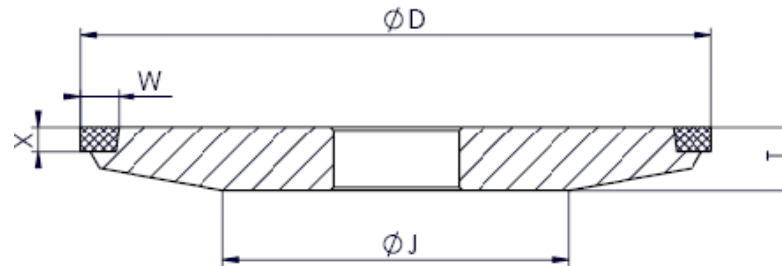


Form	Zeichnung	D	T	H	U	X	Körnung	Konzentration	Bindung	TYPE
Shape	Drawing						Grit	Concentration	Bond	
3A1R	3989M	100	17	20	10	4	D91	C75	B53	395363

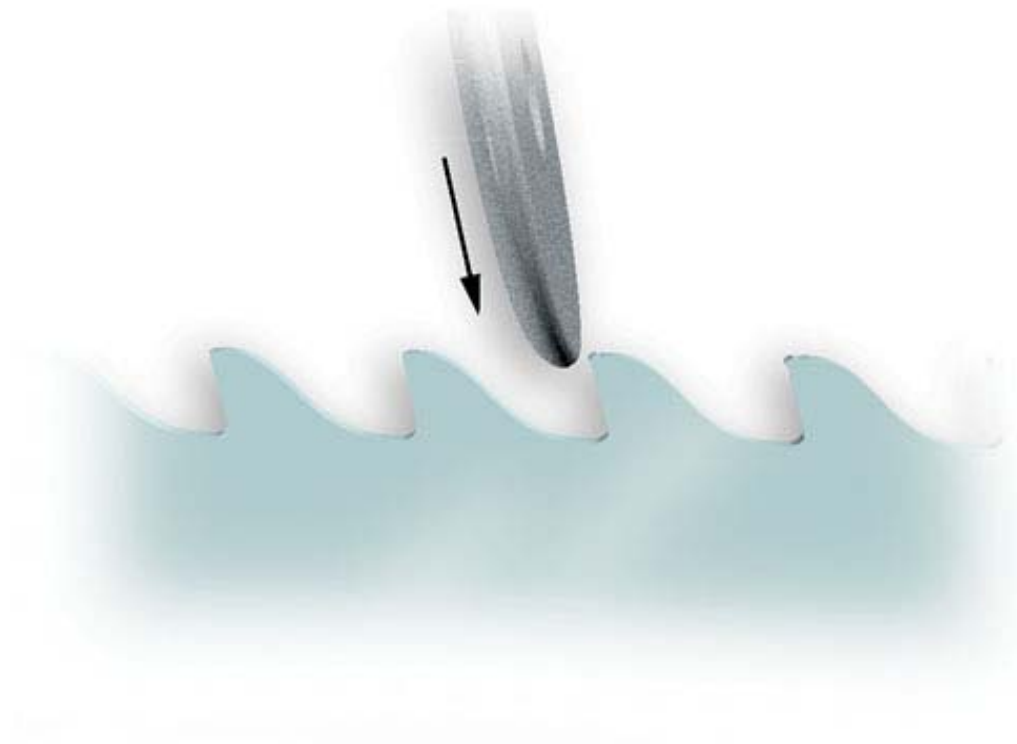
SIDE GRINDING UNIVERSAL GRINDING MACHINES

CBN Wheels

[Index](#)



Form Shape	Zeichnung Drawing	D	T	H	W	X	Körnung Grit	Konzentration Concentration	Bindung Bond	TYPE
4B9	345C	100	10	20	5	4	B91	C50	B54	462736

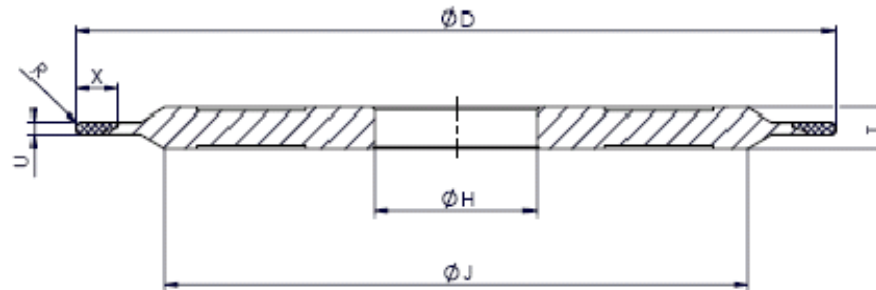


TEETH GRINDING

LOROCH, REKORD, SCHMIDT-TEMPO

CBN Wheels

Index



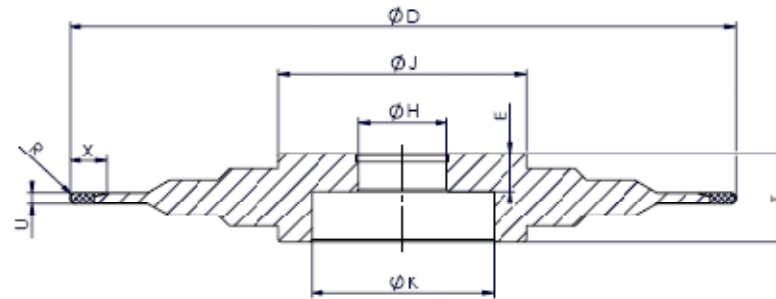
INFO:

For teeth grinding of HSS saw blades on CNC grinding machines

Form Shape	Zeichnung Drawing	D	T	H	U	X	R	Körnung Grit	Konzentration Concentration	Bindung Bond	TYPE
14F1	5677o	200	8	32	1	8,4	0,5	B126	C125	B87	462921
14F1	5677H	200	8	32	1,3	8,4	0,65	B126	C125	B87	462924
14F1	5677i	200	8	32	1,6	8,4	0,8	B126	C125	B87	454693
14F1	5677G	200	8	32	2	8,4	1	B126	C125	B87	462928
14F1	5677F	200	8	32	2,5	8,4	1,25	B151	C125	B87	462932
14F1	5677E	200	8	32	3	12,5	1,5	B151	C125	B87	462937
14F1	5677A	200	8	32	4	12,5	2	B151	C125	B87	462944
14F1	5677B	200	8	32	5	12,5	2,5	B151	C125	B87	462946
14F1	5677C	200	8	32	6	12,5	3	B151	C125	B87	462948

CBN Wheels

Index



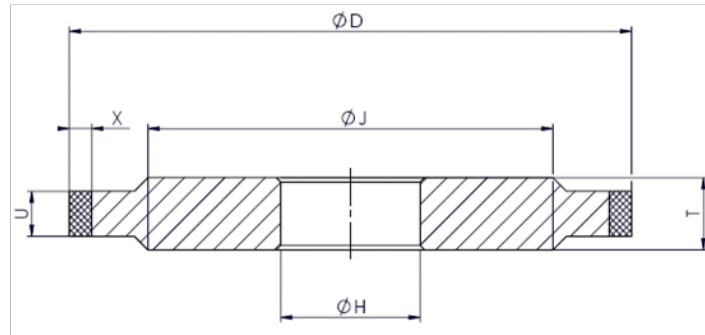
INFO:

For teeth grinding of HSS saw blades on CNC grinding machines

Form	Zeichnung	D	T	H	U	X	R	Körnung	Konzentration	Bindung	TYPE
Shape	Drawing							Grit	Concentration	Bond	
14F1	7434N	150	20	20	1	8,4	0,5	B126	C125	B87	462909
14F1	7434G	150	20	20	1,3	8,4	0,65	B126	C125	B87	462911
14F1	7434F	150	20	20	1,6	8,4	0,8	B126	C125	B87	462912
14F1	7434E	150	20	20	2	8,4	1	B126	C125	B87	462914
14F1	7434M	150	20	20	2,5	8,4	1,25	B151	C125	B87	462916
14F1	7434J	150	20	20	3	12,5	1,5	B151	C125	B87	462918

Diamond Wheels

[Index](#)



INFO:

For profile grinding in
blanketts and milling cutters
made of solid carbide

Form Shape	Zeichnung Drawing	D	T	H	U	X	Körnung Grit	Konzentration Concentration	Bindung Bond	TYPE
14A1		200	5	60	4	10	D46	C100	B53	462942

CBN Wheels

INFO:

For profile grinding in
blanketts and milling cutters
made of HSS

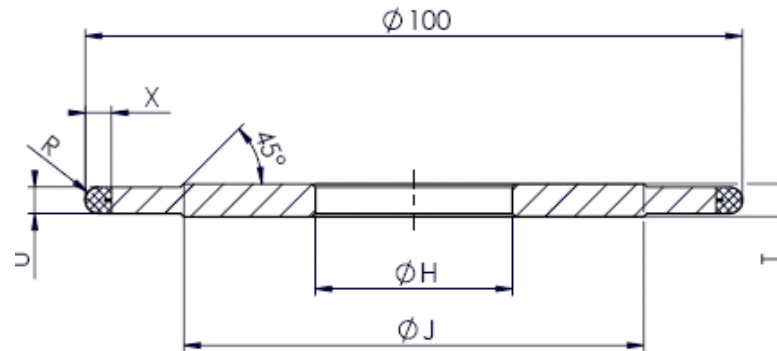
Form Shape	Zeichnung Drawing	D	T	H	U	X	Körnung Grit	Konzentration Concentration	Bindung Bond	TYPE
14A1	5500C	200	5	60	4	3	B126	C100	B53	462922

PROFILE GRINDING

WEINIG RONDAMAT

Diamond Wheels

Index



INFO:

For profile grinding in
blanketts and milling cutters
made of solid carbide

Form	Zeichnung	D	T	H	U	X	R	Körnung	Konzentration	Bindung	TYPE
Shape	Drawing							Grit	Concentration	Bond	
14F1	4970	200	5	60	4	7	2	D64	C100	B53	462939
14F1	4970	200	5	60	4	7	2	D126	C100	B53	462941
14F1R	4970	200	10	60	3	5	1,5	D64	C100	B53	462926
14F1R	4970	200	5	60	2	7	1	D64	C100	B53	462943

CBN Wheels

INFO:

For profile grinding in
blanketts and milling cutters
made of HSS

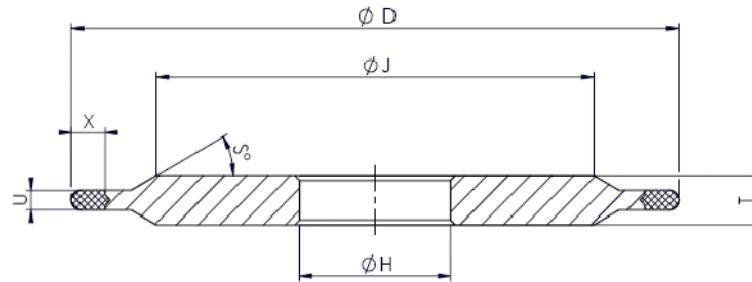
Form	Zeichnung	D	T	H	U	X	R	Körnung	Konzentration	Bindung	TYPE
Shape	Drawing							Grit	Concentration	Bond	
14F1	4970	200	5	60	4	7	2	B126	C75	B53	462915

PROFILE GRINDING

UNIVERSAL PROFILE GRINDING MACHINES

Diamond Wheels

[Index](#)



INFO:

For profile grinding in
blanketts and milling cutters
made of solid carbide

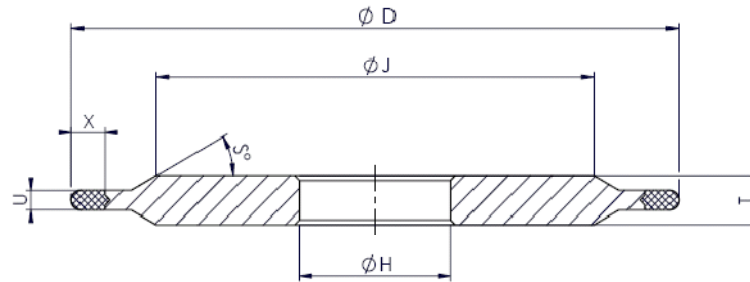
Shape	Drw	D	T	H	U	X	R	Grit	Concentrati on	BA	BN	TN
14F1	3161	200	10	20	2	7	1	D 64	100	B 53		463195
14F1	3161	200	10	30	2	7	1	D 64	100	B 53		463198
14F1	3161	200	10	31,8	2	7	1	D 64	100	B 53		463201
14F1	3161	200	10	32	2	7	1	D 64	100	B 53		463205
14F1	3161	200	10	40	2	7	1	D 64	100	B 53		463208
14F1	3161	200	10	50	2	7	1	D 64	100	B 53		463209
14F1	3161	200	10	60	2	7	1	D 64	100	B 53		463210
14F1	07705C	200	10	20	4	7	2	D 126	100	B 53		463211
14F1	07705C	200	10	30	4	7	2	D 126	100	B 53		462720
14F1	07705C	200	10	31,8	4	7	2	D 126	100	B 53		462721
14F1	07705C	200	10	32	4	7	2	D 126	100	B 53		462722
14F1	07705C	200	10	40	4	7	2	D 126	100	B 53		462723
14F1	07705C	200	10	50	4	7	2	D 126	100	B 53		462724

PROFILE GRINDING

UNIVERSAL PROFILE GRINDING MACHINES

CBN Wheels

[Index](#)



INFO:

For profile grinding in
blanketts and milling cutters
made of HSS

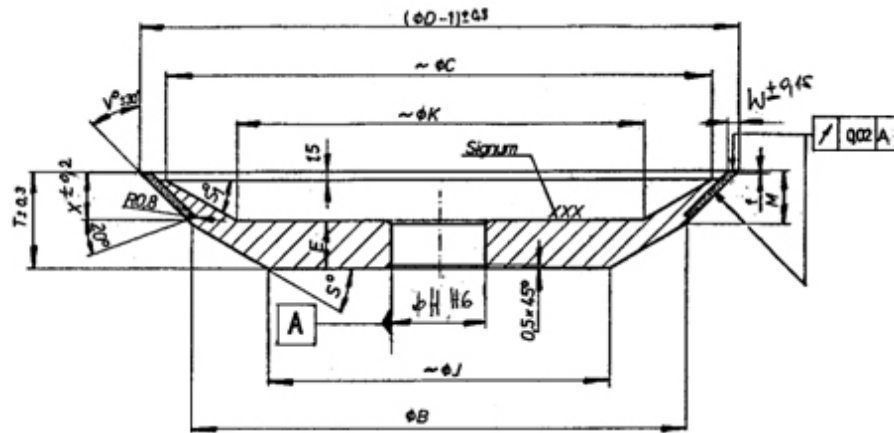
Shape	Zng	D	T	H	U	X	R	Grit	Concentration	BA	BN	TN
14F1	07705C	200	10	31,75	4	7	2	B 151	75	B 53		463137
14F1	07705C	200	10	32	4	7	2	B 151	75	B 53		463139
14F1	07705C	200	10	40	4	7	2	B 151	75	B 53		463140
14F1	07705C	200	10	50	4	7	2	B 151	75	B 53		463142
14F1	07705C	200	10	60	4	7	2	B 151	75	B 53		463144

PROFILSCHLEIFEN MINIZINKENFRÄSER

UNIVERSAL PROFILE GRINDING MACHINES

CBN Wheels

[Index](#)



INFO:

For profil grinding of milling cutters made of HSS

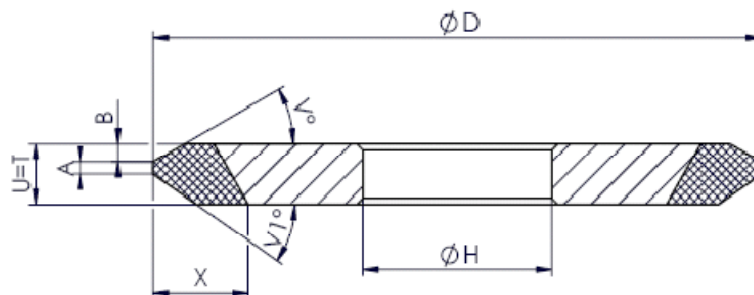
Form	Zeichnung	D	T	H	W	X	V°	Körnung	Konzentration	Bindung	TYPE
Shape	Drawing							Grit	Concentration	Bond	
15V9	1195i	175	25	20	2	6	45	B126	C75	B54	190636

PROFILE GRINDING PIN DRILLS

UNIVERSAL TOOL GRINDING MACHINES

CBN Wheels

[Index](#)



INFO:

For profile grinding and center grinding of pin drills .

Further dimensions on request

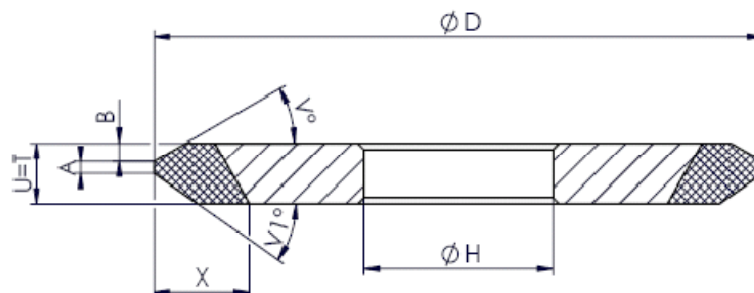
Drill Ø mm	Shape	Drw	D	T	H	W	X	V°	V1°	A	Grit	Concentration	Bond	Type
4mm	1BM1	04705A	75	4	20	4	8	45	22,5	A=0,9	B 91	75	B 54	463068
5 and 6mm	1BM1	04705B	75	4,5	20	4,5	7	45	22,5	A=1,7	B 91	75	B 54	102748
8mm	1BM1	04705C	75	5	20	5	6,5	45	22,5	A=2,4	B 91	75	B 54	463070
10mm	1BM1	04705D	75	6	20	6	6	45	22,5	A=3,7	B 91	75	B 54	463071

PROFILE GRINDING PIN DRILLS

UNIVERSAL TOOL GRINDING MACHINES

Diamond Wheels

[Index](#)



INFO:

For profile grinding and center grinding of pin drills .

Further dimensions on request

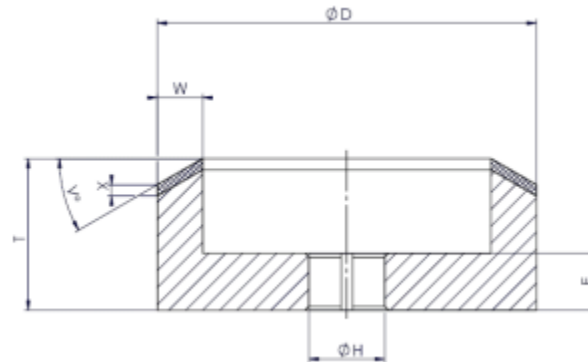
Drill Ø mm	Shape	Drw	D	T	H	W	X	V°	V1°	A	Grit	Concentration	Bond	Type
4mm	1BM1	04705A	75	4	20	4	8	45	22,5	A=0,9	D 64	75	B 52	790783
5 and 6mm	1BM1	04705B	75	4,5	20	4,5	7	45	22,5	A=1,7	D 64	75	B 52	848480
8mm	1BM1	04705C	75	5	20	5	6,5	45	22,5	A=2,4	D 64	75	B 52	790784
10mm	1BM1	04705D	75	6	20	6	6	45	22,5	A=3,7	D 64	75	B 52	867805

REGRINDING OF CUTTER KNIFES

WEINIG RONDAMAT

CBN Wheels

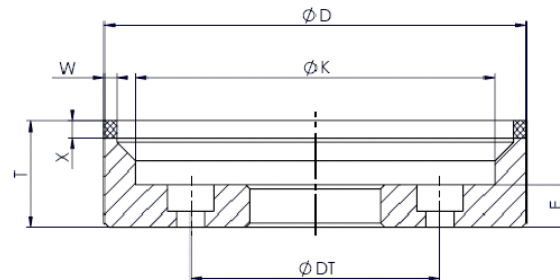
Index



INFO:

For regrinding of HSS cutter knives mounted in the tool holder

Shape	Drawing	D	T	H	W	X	V°	Gritsize	Concentration	Bond	Type
6V5	3066	100	30	20	3	6	15	B 126	50	B 54	462910



INFO:

For regrinding of HSS cutter knives mounted in the tool holder

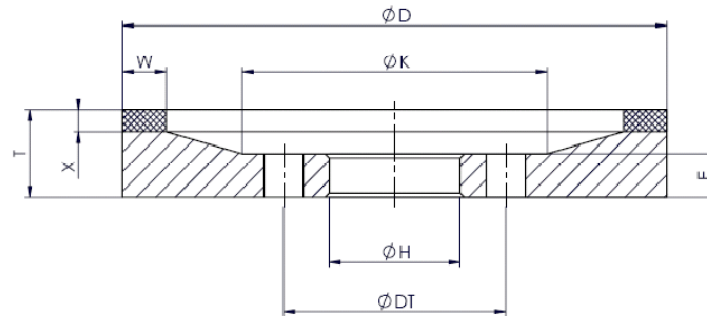
Shape	Drawing	D	T	H	W	X	Gritsize	Concentration	Bond	Type
6A2B		125	18	20	3	4	B 107	50	B 74	34480

REGRINDING OF CUTTER KNIFES

GÖCKEL, REFORM

Göckel Diamond Wheels

[Index](#)

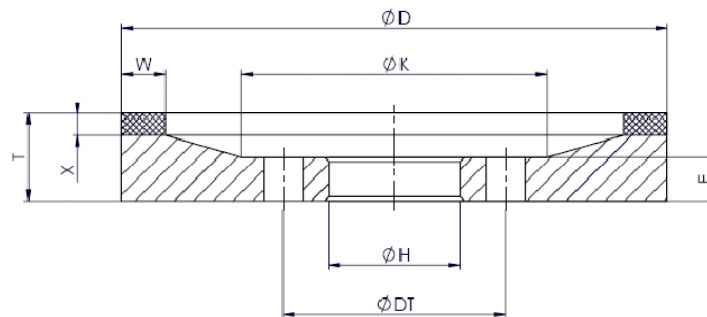


INFO:

For grinding of tipped cutter knives and paper knives. Also for circular knives.

Shape	Drawing	D	T	H	W	X	Gritsize	Concentration	Bond	Type
6A2H	01021P	200	30	50	8	4	D 126	100	B 52	462673

Reform Diamond Wheels



INFO:

For grinding of tipped cutter knives and paper knives. Also for circular knives.

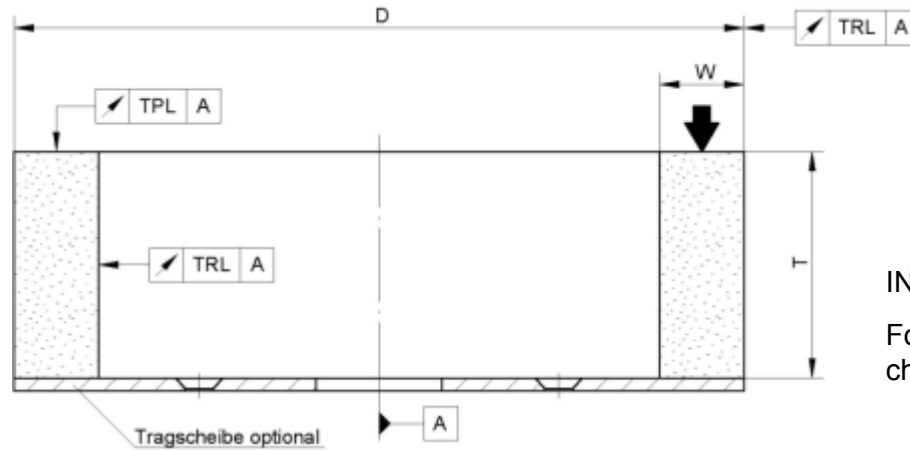
Shape	Drawing	D	T	H	W	X	Gritsize	Concentration	Bond	Type
6A2T		200	35	75	8	4	D 126	100	B 52	470272

CUTTER AND CHIPPER KNIFE

GÖCKEL, REFORM

Conventional Grinding Wheels

[Index](#)



INFO:

For grinding of cutter and chipper knives made of HSS

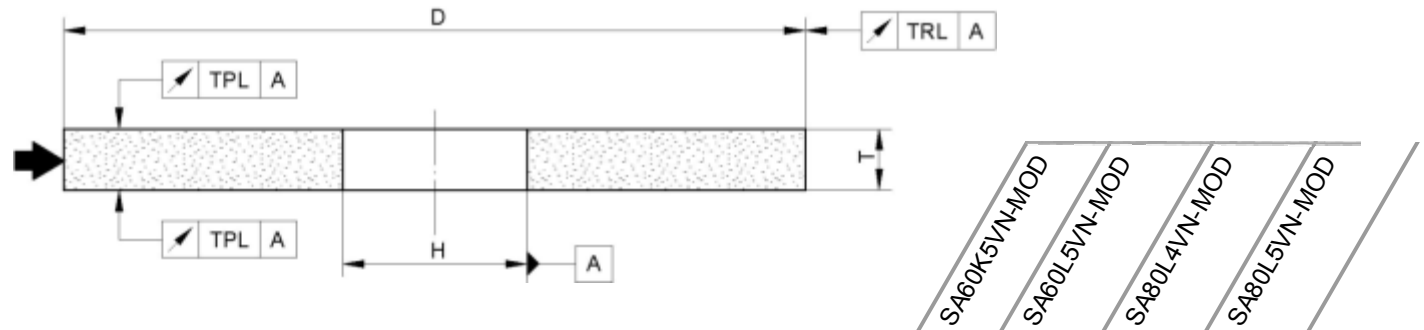
Shape	D	T	H	W	Grit size		Hardn	Struc	Bond		Type
2	200	100	160	20	89	A 60.2	G	4	B 22	W4E	469614
2	225	90	185	20	89	A 60.2	G	4	B 22	W4E	469617
2	250	100	200	25	89	A 60.2	G	4	B 22	W4E	469619

VN-MOD AUTOMATIC SAW SHARPENING

CONVENTIONAL GRINDING WHEELS, SHAPE 1

VN-MOD

Index



VN-MOD

The modified network structure of the bond system ensures complete new and measurable characteristics

- Cool grinding appearance
- High profile retention
- High run out accuracy
- High shock resistance due to new bond structure

Shape	D	T	H	Type	
1	150	1,5	32		292129
1	150	1,75	32		241847
1	150	2	32		292130
1	150	2,25	32		212089
1	150	2,5	32		123688
1	150	2,75	32		444687
1	150	3	32		226295
1	150	3,25	32		
1	150	3,5	32		935731
1	150	3,75	32		
1	150	4	32		292131
1	150	4,5	32		110674
1	150	5	32		93906
1	150	5,5	32	909887	
1	150	6	32	946904	
1	150	6,5	32		
1	150	7	32		
1	150	7,5	32		
1	150	8	32	441302	
1	150	9	32		
1	150	10	32	441301	

INFO:

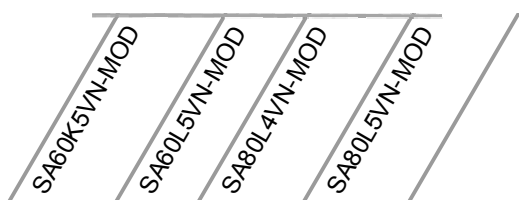
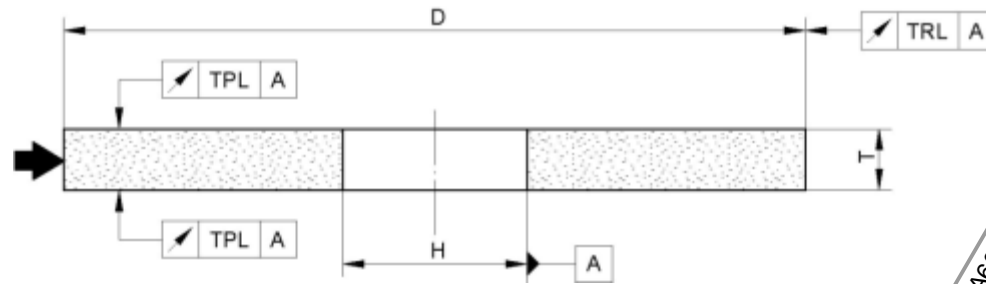
For grinding of saws made of HSS
at a max. working speed $v_s=63\text{m/s}$

VN-MOD AUTOMATIC SAW SHARPENING

CONVENTIONAL GRINDING WHEELS, SHAPE 1

VN-MOD

Index



VN-MOD

The modified network structure of the bond system ensures complete new and measurable characteristics

- Cool grinding appearance
- High profile retention
- High run out accuracy
- High shock resistance due to new bond structure

Shape	D	T	H	Type		
1	200	1,5	32			804962
1	200	1,75	32			804963
1	200	2	32			804964
1	200	2,25	32			804965
1	200	2,5	32			804966
1	200	2,75	32			804967
1	200	3	32			804954
1	200	3,25	32			804955
1	200	3,5	32			804957
1	200	3,75	32			804958
1	200	4	32			804945
1	200	4,5	32	804995		
1	200	5	32	804993		
1	200	5,5	32	804996		
1	200	6	32	805000		
1	200	6,5	32	805001		
1	200	7	32	805002		
1	200	7,5	32	805003		
1	200	8	32	804976		
1	200	9	32	804977		
1	200	10	32	804979		

INFO:

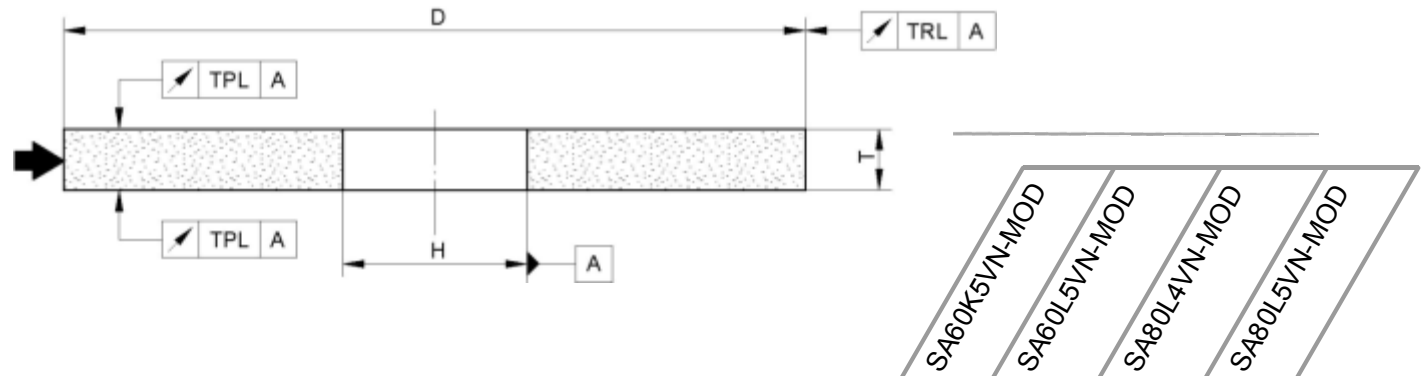
For grinding of saws made of HSS
at a max. working speed $v_s=63\text{m/s}$

VN-MOD AUTOMATIC SAW SHARPENING

CONVENTIONAL GRINDING WHEELS, SHAPE 1

VN-MOD

Index



VN-MOD

The modified network structure of the bond system ensures complete new and measurable characteristics

- Cool grinding appearance
- High profile retention
- High run out accuracy
- High shock resistance due to new bond structure

Shape	D	T	H	Type			
1	250	3	32			901252	
1	250	3,5	32			901253	
1	250	4	32			901254	
1	250	4,5	32			901255	
1	250	5	32			901256	
1	250	6	32			901258	
1F	200	8	32		804986		(standard)
1F	200	8	32	805007			
1F	200	10	32		804983		
1F	200	10	32	805008			
1F	200	12	32	805009			
1F	250	8	32	805017			
1F	250	10	32	805018			
1F	250	12	32	805019			
1F	250	13	32	805015			

INFO:

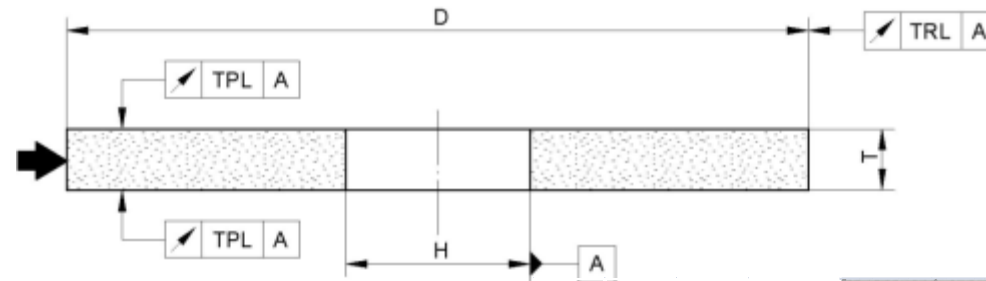
For grinding of saws made of HSS
at a max. working speed $v_s=63\text{m/s}$

AUTOMATIC SAW SHARPENING

CONVENTIONAL GRINDING WHEELS, SHAPE 1

Vitrified And Resin Bonded Wheels

Index



89 A60K5AV217	89 A60M5A V217	88 A60N4AV217	89 A60M5A V217	88 A80M5A V217	A60N4B2
---------------	----------------	---------------	----------------	----------------	---------

D	T	H	TYPE	
150	2	30		2560
150	2	32		291118
150	3	20		52720 101929
150	3	30		18825
150	3	32		55375
150	4	20		9293 19117
150	4	32	441709	291120
150	6	20	18806	
150	6	32	9325 305800	
150	6	38		490222
150	8	20	34114	
150	8	32	474723 455124	
150	10	20	7168	
150	10	32	27676	10265
175	4	51	50844	
175	6	32	719907	
175	6	51	123222	
175	8	32	719916	172352
175	8	51	50845	
175	10	20		

89 A60K5AV217	89 A60M5A V217	88 A60N4AV217	89 A60M5A V217	88 A80M5A V217	A60N4B2
---------------	----------------	---------------	----------------	----------------	---------

D	T	H	TYPE		
200	3	32		291095	513788
200	4	32		14492	513793 75089
200	6	20		3070	
200	6	32	110554	476062	
200	8	20		3077	173609
200	8	32	364944	525686	
200	10	20		3085	719918
200	10	32	3091	608080	720012
200	13	32		51494	
250	8	20		88790	
250	8	32		61796	
250	10	20		3424	161678
250	10	32	407610		
250	13	20		33249	
250	13	32		719922	

INFO:

For grinding of saws made of tool steel or HSS

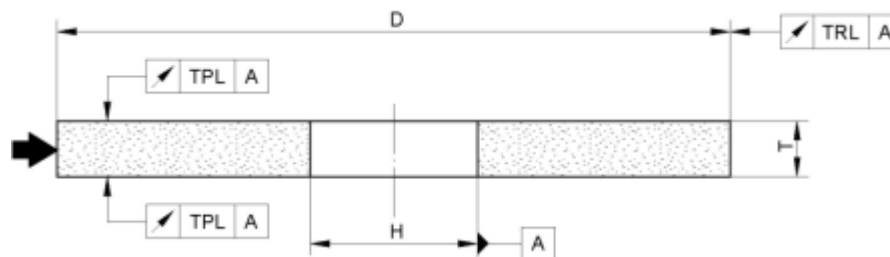
For Stellite tipped saws use: 455A80 M6 B82

AUTOMATIC SAW SHARPENING

CONVENTIONAL GRINDING WHEELS, SHAPE 1

Resin bonded for Stellite tipped band saws

[Index](#)



D	T	H	TYPE	
300	10	32	150402	241857
300	12	32	226401	

455A60-9L7 B82/63
455A80-9K6B 22/63

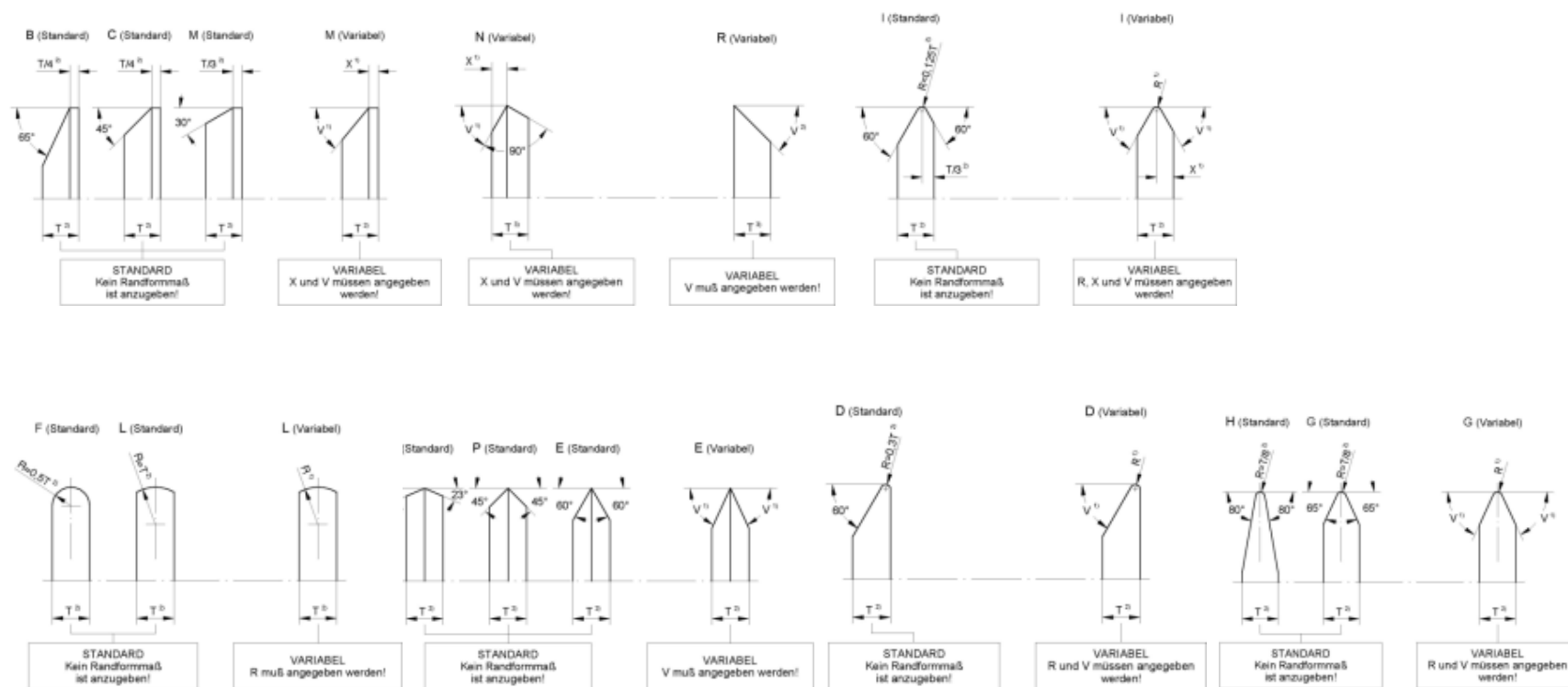
INFO:

For grinding of Stellite tipped band saws on Vollmer machines

AUTOMATIC SAW SHARPENING CONVENTIONAL GRINDING WHEELS

Wheels with Shape 1 can be produced with the listed profiles

[Index](#)

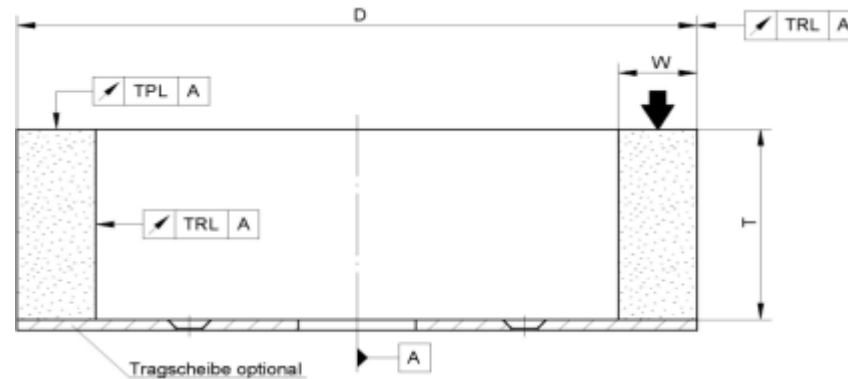


AUTOMATIC SAW SHARPENING

CONVENTIONAL GRINDING WHEELS SHAPE 2

Vitrified And Resin Bonded Wheels

[Index](#)



Range of dimensions

Diameter D 150 to 300mm

Thickness T 80 to 140mm

Width W 10 to 30mm

Vitrified

Grit	Gritsize	KK	Hardn.	Struct	Bond
A	36 bis 80	1; 2	F bis M	3 bis 11	V

Resin

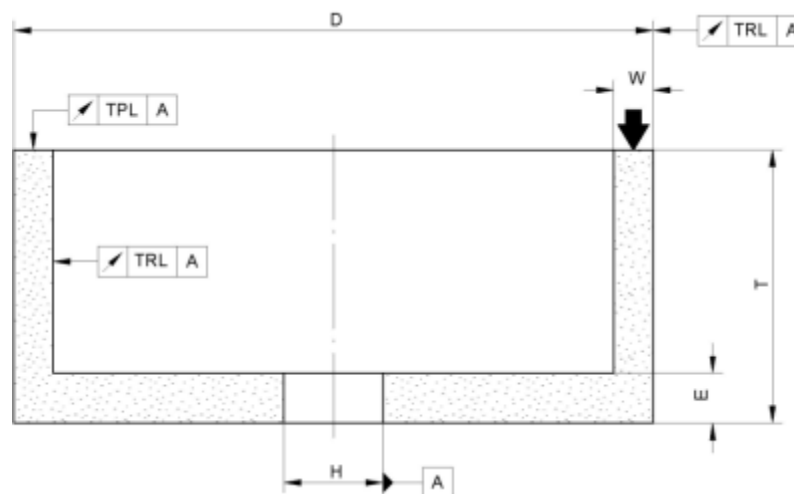
Grit	Gritsize	KK	Hardn.	Struct	Bond
A	36 bis 120	1; 2	D bis L	3 bis 7	B

AUTOMATIC SAW SHARPENING

CONVENTIONAL GRINDING WHEELS SHAPE 6

Vitrified

Index



89 A60J5AV217
 89 A60K5AV217
 89 A60M5AV217
 89 A54.2i5AV217

D	T	H	W/E	TYPE			
80	40	20	6/10		5843		
100	50	20	8/10				19040
100	50	20	10/10	5886	5887	49273	
125	63	20	8/13				451151
150	80	32	10/16	186445			

INFO:

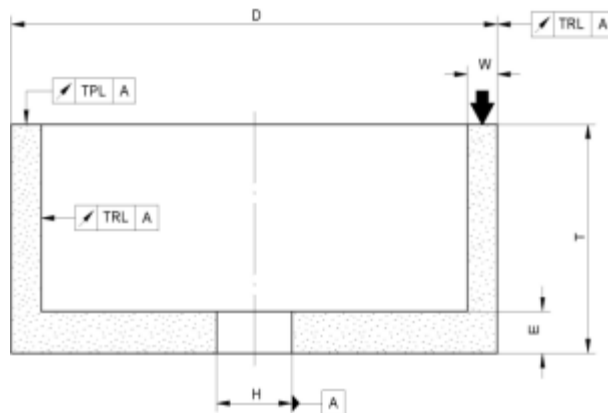
For grinding of saws and tools made of tool steel or HSS

AUTOMATIC SAW SHARPENING

CONVENTIONAL GRINDING WHEELS SHAPE 6

Vitrified And Resin Bonded Wheels

[Index](#)



Range of dimensions

Diameter	D 50 to 200mm
Thickness	T 30 to 100mm
Width	W 4 to 30mm
Bottom	E 6 to 30mm

Vitrified

Grit	Gritsize	KK	Hardn.	Struct	Bond
A; C	36 bis 320	1; 2	F bis o	4 bis 11	V

Resin

Grit	Gritsize	KK	Hardn.	Struct	Bond
A	36 bis 80	1; 2	H bis M	3 bis 7	B

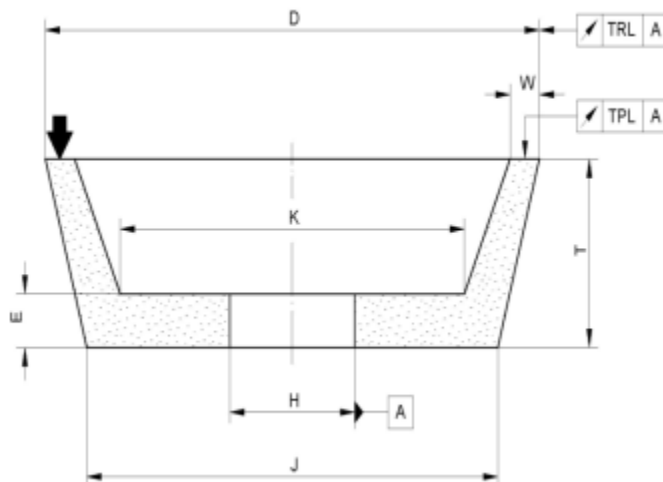
INFO:
For grinding of saws and tools
made of tool steel or HSS

AUTOMATIC SAW SHARPENING

CONVENTIONAL GRINDING WHEELS SHAPE 11

Vitrified

Index



Range of dimensions

Diameter	D 50 to 200mm
Thickness	T 20 to 70mm
Width	W 2 to 15mm
Bottom	E 8 to 18mm

Vitrified

Grit	Gritsize	KK	Hardn.	Struct	Bond
A; C	36 bis 120	1; 2	G bis K	4 bis 8	V

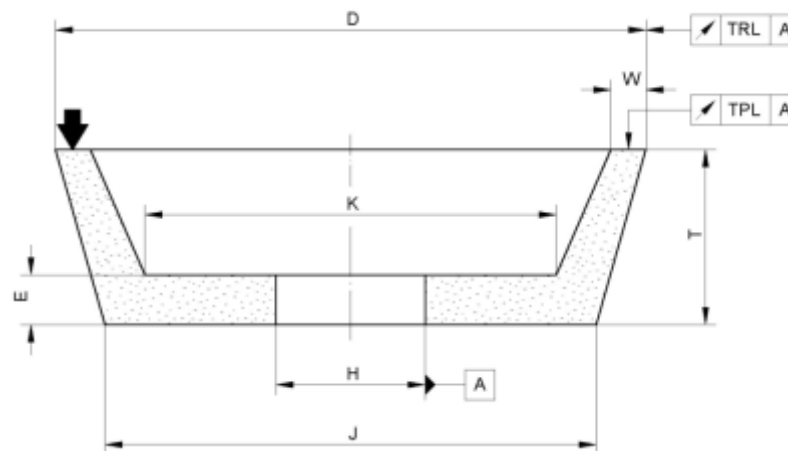
INFO:
For grinding of saws and tools
made of tool steel or HSS

AUTOMATIC SAW SHARPENING

CONVENTIONAL GRINDING WHEELS SHAPE 11

Vitrified

Index



89A60.1K5AV217
89A46.2i5AV217

D/J	T	H	W/E/K	TYPE
80/57	32	20	6/8/46	338237
100/71	40	20	8/10/56	4924
125/96	40	20	8/10/81	4942
150/114	50	32	10/13/96	203176

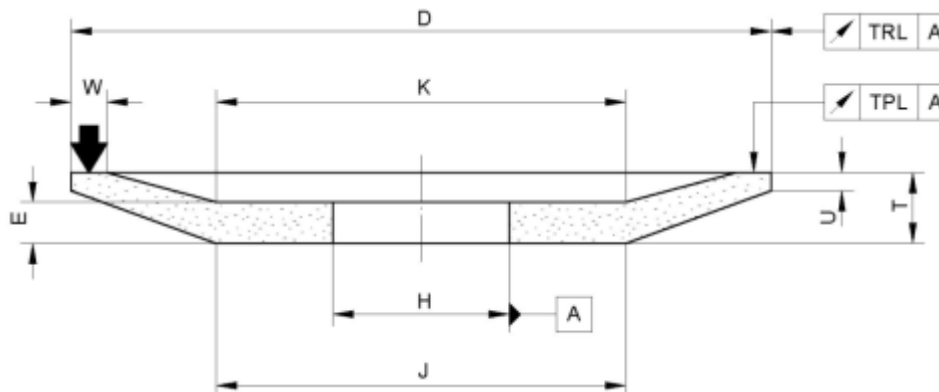
INFO:
For grinding of saws and tools
made of tool steel or HSS

AUTOMATIC SAW SHARPENING

CONVENTIONAL GRINDING WHEELS SHAPE 12

Vitrified

Index



89A60.1K5AV217
89A60.1J5i5AV217

D/JxT	UxH	W/E/K	TYPE	
80/40x10	2x20	4/6/40	49605	
100/50x13	3x20	5/7/50	19659	
125/63x13	3x32	6/7/63		80341
150/75x16	3x20	10/10/85		9398

INFO:

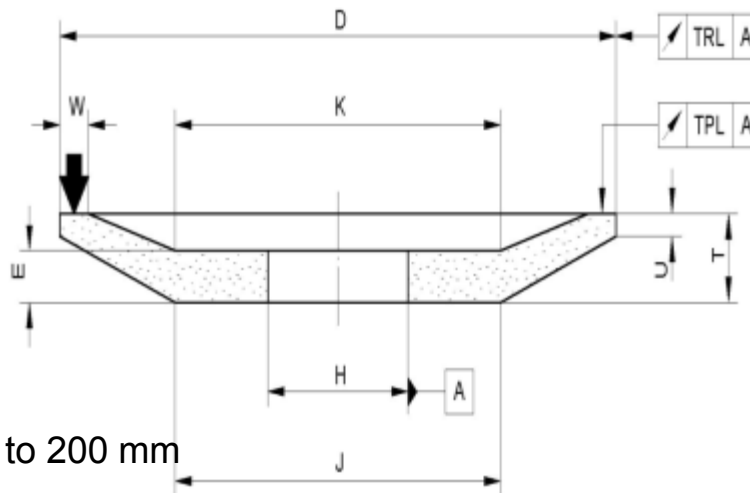
For grinding of saws and tools made of tool steel or HSS

AUTOMATIC SAW SHARPENING

CONVENTIONAL GRINDING WHEELS SHAPE 12

Vitrified

[Index](#)



Range of dimensions

Diameter	D 50 to 200 mm
Thickness	T 6 to 40 mm
Width 1	W 3 to 13 mm
Width 2	U 1,5 to 8 mm
Bottom	E 6 to 13 mm

INFO:
For grinding of saws and tools made of tool steel or HSS

Vitrified

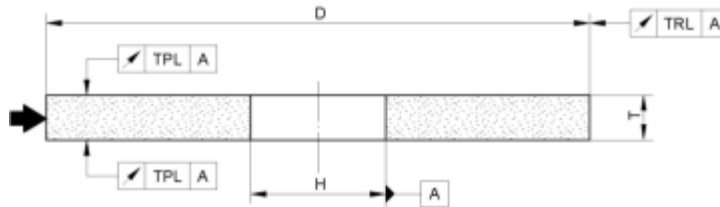
Grit	Gritsize	KK	Hardn.	Struct	Bond
A; C	36 bis 120	1; 2	G bis K	4 bis 8	V

EFFECT GRINDING

CONVENTIONAL GRINDING WHEELS SHAPE 1

Elastic

Index



INFO:

To improve the surface quality and for special optical effects.

To substitute cork and felt wheels and grinding belts.

Machines:

Vollmer, Gerling, Petschauer, Kähny, Engländer&Beyer

Shape	D	T	H	Grit size		Bond			V max	Type
1	150	25	20	C	46	-	BE	19 F	32m/s	491873
1	200	25	32	C	46	-	BE	19 F	32m/s	491874
1	250	25	32	C	46	-	BE	19 F	32m/s	491875
1	250	40	25	C	46	-	BE	19 F	32m/s	491879
1	300	35	127	C	46	-	BE	19 F	32m/s	826979
1	350	40	127	C	46	-	BE	19 F	32m/s	491880
1	400	25	127	C	46	-	BE	19 F	32m/s	491882
1	400	50	127	C	46	-	BE	19 F	32m/s	491883
1	500	50	127	C	46	-	BE	19 F	32m/s	491885

INFO:

Standard specification

Shape	D	T	H	Grit size		Bond			V max	Type
1	150	25	20	C	46	-	BE	16	32m/s	491886
1	200	25	32	C	46	-	BE	16	32m/s	491887
1	250	25	32	C	46	-	BE	16	32m/s	491888
1	250	40	25	C	46	-	BE	16	32m/s	491889
1	300	35	127	C	46	-	BE	16	32m/s	491891
1	350	40	127	C	46	-	BE	16	32m/s	491892
1	400	25	127	C	46	-	BE	16	32m/s	491893
1	400	50	127	C	46	-	BE	16	32m/s	491894
1	500	50	127	C	46	-	BE	16	32m/s	491895

INFO:

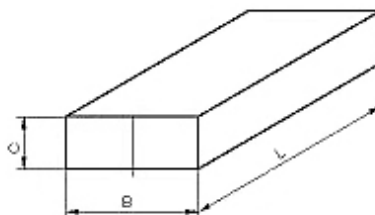
Harder than standard specification

SHARPENING STICKS

CONVENTIONAL SHARPENING STICK SHAPE 90AS

Vitrified

Index



Width B	Hight C	Lenght L	Specification	Type
25	13	100	89A120J7AV17	441268 *
			89A240J7AV17	452492
50	25	200	89A120J7AV17	460976 *
			89A240J7AV17	464290 *

INFO:

89A120 for grinding wheels with grit size 76 – 181µm

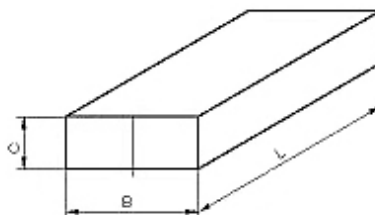
89A240 for grinding wheels with grit size 25 – 64µm

* ... on stock

CONVENTIONAL JOINTING STICKS SHAPE 9030, 90B, 54SCH

Vitrified And Resin Bonded

[Index](#)



Shape	Width B	Hight C	Lenght L	Specification	Type
9030		12	32	C280J5V18	775476
90B	60	15	160	55AC500F4B0S	282735
54SCH	60	15	160	55AC500F4B0S	821004
54SCH	60	15	160	454A500D2B22	917288
54SCH	20	15	60	C320-55V18	351654

INFO:

9030 Round shape

90B grinding stone **B** +1/-0,5 **C**+0,5/-0,5 **L**+0/-3

54SCH super finishing stone **B** +0/-0,2 **C**+0,6/-0 **L**+2/-1

Europe

[Index](#)

Austria

TYROLIT – Schleifmittelwerke Swarovski K.G.

Fax +43 (0)5242 63398

www.tyrolit.com

Germany

TYROLIT GmbH Maisach

Fax +49 (0)8141 393 238

www.tyrolit.com

Switzerland

SIA Abrasives Frauenfeld

Fax +41 52724 425 40

sia@sia-abrasives.com

Italy

TYROLIT Vincent Srl Thiene

Fax +39 0445 3599 55

www.tyrolit.com

Please find all our sales organisations under www.tyrolit.com

Copyright

© 2009 TYROLIT-Schleifmittelwerke Swarovski KG

Texte und Abbildungen sind, falls nichts anderes angegeben ist, geistiges und rechtliches Eigentum der TYROLIT-Schleifmittelwerke Swarovski KG. Jede komplette oder teilweise Vervielfältigung und/oder Verwendung, auch in Auszügen, bedarf der ausdrücklichen schriftlichen Zustimmung der TYROLIT-Schleifmittelwerke Swarovski KG. Die Texte sind ausschließlich im Rahmen dieser Veröffentlichung freigegeben. Jede widerrechtliche Abbildung oder Vervielfältigung, egal auf welchem Weg, stellt eine rechtswidrige Nachahmung dar.

Copyright

© 2009 TYROLIT-Schleifmittelwerke Swarovski KG

Text and pictures are intellectual and legal property of TYROLIT-Schleifmittelwerke Swarovski KG, if not noticed contrary. Any complete or partial multiplication and/or use of text or elements, also in extracts, needs the explicit written agreement of TYROLIT-Schleifmittelwerke Swarovski KG. Text is released only within the limits of publication at this place. Every illegal copy or multiplication, however made, is done with intent to.